

150LB Weld Neck Flange in Stainless Steel-Schedule 10 or 40 Pipe

- Sizes ½" to 6" (DN15 – DN150)
- Pipe Options of Schedule 10 or 40
- BS EN 10204.3.1B Certificates Available
- Bolts and Gaskets Supplied to Suit
- 316L Stainless Steel
- Raised Face

> Description

A class 150LB 316L stainless steel weld neck flange offered in a choice of two flanges for either schedule 10S or 40S pipe. Raised face, conforming to ANSI/ASME B16.5 standards

Available in 316L with full material traceability and 3.1B certification upon request.

Bolt kit sizes shown in the table are for bolting two flanges together including the thickness of a gasket. If using a wafer pattern valve, longer bolts will be required.

> Schedule 10

150LB raised face schedule 10S weld neck flange.

Sizes ½" to 6" nominal bore.

To ANSI/ASME B16.5 Standard.

BS EN 10204 3.1B certificates available.

> Schedule 40

150LB raised face schedule 40S weld neck flange.

Sizes ½" to 6" nominal bore.

To ANSI/ASME B16.5 Standard.

BS EN 10204 3.1B certificates available.



Description

A 316L Stainless Steel class 150LB weld neck flange, conforming to ANSI/ASME B16.5 standard. Sizes from ½" (DN15) to 6" (DN150). Full traceability and 3.1B certificates can be provided.

A choice of flange suitable for schedule 10 or 40.



Beschreibung

Ein Vorschweißflansch aus Edelstahl 316L der Klasse 150LB, der dem Standard ANSI/ASME B16.5 entspricht. Größen von ½" (DN15) bis 6" (DN150). Vollständige Rückverfolgbarkeit und 3.1B-Zertifikate können bereitgestellt werden.

Eine Auswahl an Flanschen, die für Schedule 10 oder 40 geeignet sind.



Descripción

Una brida de cuello soldado de acero inoxidable 316L clase 150LB, conforme a la norma ANSI/ASME B16.5. Tamaños de ½" (DN15) a 6" (DN150). Se pueden proporcionar trazabilidad completa y certificados 3.1B.

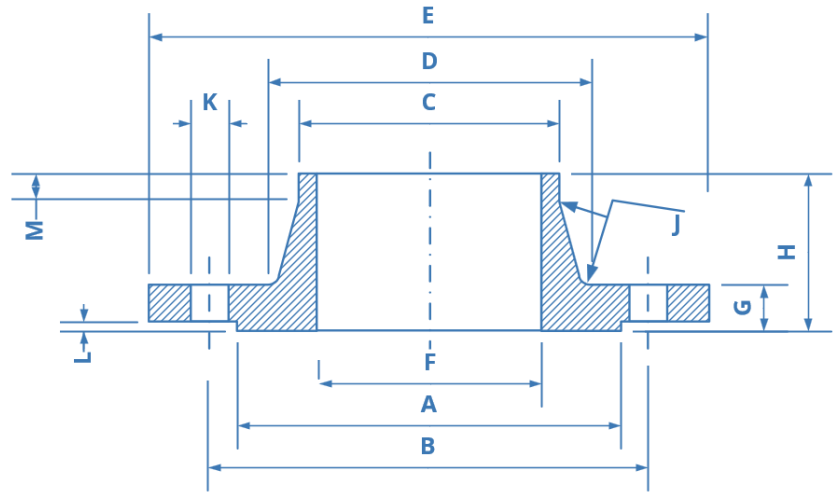
Una opción de brida adecuada para cédula 10 o 40.



Description

Une bride à souder en acier inoxydable 316L classe 150LB, conforme à la norme ANSI/ASME B16.5. Tailles de ½" (DN15) à 6" (DN150). Une traçabilité complète et des certificats 3.1B peuvent être fournis.

Un choix de bride adaptée au schedule 10 ou 40.



150LB Weld Neck Flange Schedule 10 & 40 in 316L

Pipe Size	DN	SCH 40	SCH 10	A	B	C	D	E	F SCH10	F SCH40	G	H	J	K	L	M	Bolt	KG	Bolt Kit
1/2"	15	F150WN0.5	F150WN0.5/10	34.9	60.3	21.3	30.2	88.9	17.1	15.8	11.1	46.7	3	15.9	1.6	6.4	4 x M12	0.5	BK02
3/4"	20	F150WN.75	F150WN.75/10	42.9	69.8	26.7	38.1	98.4	22.5	20.93	12.7	52.4	3	15.9	1.6	6.4	4 x M12	0.7	BK03
1"	25	F150WN1.0	F150WN1.0/10	50.8	79.4	33.5	49.2	107.9	27.9	26.94	14.3	55.6	3	15.9	1.6	6.4	4 x M12	1.1	BK03
1 1/4"	32	F150WN1.25	F150WN1.25/10	63.5	88.9	42.2	58.7	117.5	36.6	35.04	15.9	57.1	3	15.9	1.6	6.4	4 x M12	1.5	BK03
1 1/2"	40	F150WN1.5	F150WN1.5/10	73	98.4	48.3	65.1	127	42.7	40.9	17.5	61.9	3	15.9	1.6	6.4	4 x M12	1.8	BK03
2"	50	F150WN2.0	F150WN2.0/10	92.1	120.6	60.4	77.8	152.4	54.8	52.5	19	63.5	3	19	1.6	6.4	4 x M16	2.7	BK04
2 1/2"	65	F150WN2.5	F150WN2.5/10	104.8	139.7	73.1	90.5	177.8	66.9	62.71	22.2	69.8	3	19	1.6	6.4	4 x M16	4.4	BK06
3"	80	F150WN3.0	F150WN3.0/10	127	152.4	88.9	107.9	190.5	82.8	77.92	23.8	69.8	3	19	1.6	6.4	4 x M16	5.2	BK06
4"	100	F150WN4.0	F150WN4.0/10	157.2	190.5	114.3	134.9	228.6	108.2	102.26	23.8	76.2	3	19	1.6	6.4	8 x M16	7.5	BK07
5"	125	F150WN5.0	F150WN5.0/10	185.7	215.9	141.2	163.5	254	134.5	128.2	23.8	88.9	6.5	22.2	1.6	6.4	8 x M20	9.2	BK10
6"	150	F150WN6.0	F150WN6.0/10	215.9	241.3	168.4	192.1	279.4	161.5	154.06	25.4	88.9	6.5	22.2	1.6	6.4	8 x M20	11	BK10
8"	200	F150WN8.0	F150WN8.0/10	269.7	298.5	219.1	246.1	342.9	211.58	202.74	28.4	101.6	6.5	22.2	1.6	6.4	8 x M20	18.3	BK12



➤ Other Flanges in Stock

➤ Gaskets and Bolt Sets

