



3 Piece Sanitary Cavity Filled Direct Mount Ball Valve – Clamp End – BS4825

- No Dead Space in Through Path
- Encapsulated Seats
- Seats and Seals Comply with FDA, 3A and WRAS Requirements
- Good for use with CIP
- Sizes ½" - 4"
- Fully Maintainable
- OD Weld Ends Available

DESCRIPTION

A 3-piece sanitary ball valve with ISO 5211 mounting platform for automatic operation. Offered with TFM 1600 (FDA approved) Cavity filled ball seats and seals. ASTM A351 CF8M 316 Stainless steel construction, 316 trim. Ta-Luft self adjusting stem sealing. Chemically polished external surface, mechanical polish 0.8um internal.

Technical Information

400 psi/g Pressure rated
ATEX approved with anti static device for ball-stem-body.
Nace MR-0175 compliant
Inspection & Testing: API 598
End connections: BS 4825
Design Rating: ASME B16.34, BS4825

CAVITY FILLED SEATS

Cavity filled seats are designed to eliminate the cavity around the ball, minimize trapped fluid in the valve body that can contaminate the process. TFM 1600 cavity filled seats and seals offer excellent performance in control of food products, pharmaceuticals and high velocity applications. TFM 1600 is 3A, FDA and WRAS certified.

Certification



Description

A true full bore ball valve, suitable for sanitary applications, having polished body, TFM 1600 cavity filled seats and seals. Fully maintainable and suitable for CIP. Direct mount ISO 5211 mounting platform. Supplied with locking lever.



Beschreibung

Ein echter Kugelhahn mit voller Bohrung, der für die Hygiene geeignet ist
Anwendungen mit poliertem Körper, hohlraumgefüllten TFM 1600-Sitzen und Dichtungen. Vollständig wartbar und für KVP geeignet. Direktmontage ISO 5211 Montageplattform. Lieferung mit Verriegelungshebel.



Descripción

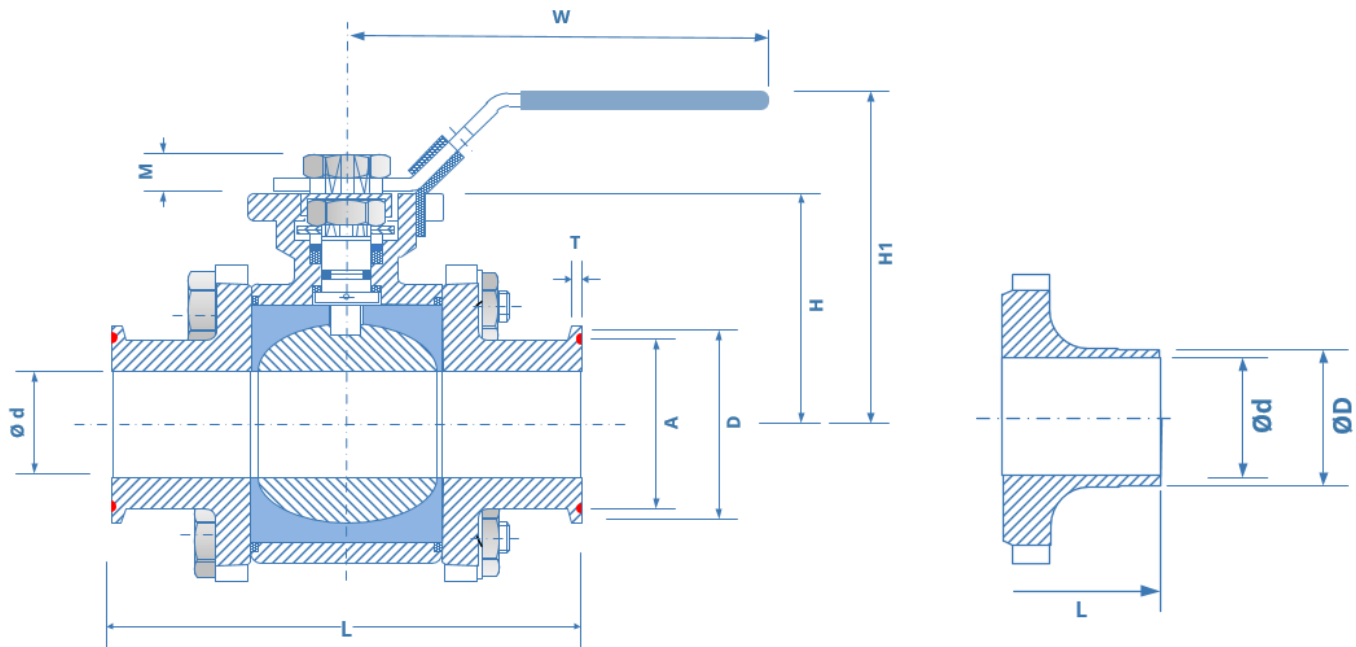
Una verdadera válvula de bola de paso total, adecuada para aplicaciones sanitarias. aplicaciones, con cuerpo pulido, asientos y sellos llenos de cavidad TFM 1600. Totalmente mantenible y apto para CIP. Plataforma de montaje ISO 5211 de montaje directo. Se suministra con palanca de bloqueo.



Description

Un vrai robinet à tournant sphérique à passage intégral, adapté aux sanitaires applications, ayant un corps poli, des sièges et des joints remplis de cavité TFM 1600. Entièrement maintenable et adapté au CIP. Plateforme de montage à montage direct ISO 5211. Livré avec levier de verrouillage.

SERIES BV5519 Sanitary Ball Valve - Clamp Ends to BS4825



BV5519 End Cap BS 4825 (Weld Ends)

Dimensions and Weights

Size	d	ØA	ØD	D	T	L	H	H1	W	P	M	E1	E2	U1	
1/2"	15	9.5	20.3	12.7	25.4	3.7	90	42	72	147	9	9	36	42	6
3/4"	20	15.9	20.3	19.1	25.4	3.7	90	49	79	147	9	9	36	50	6
1"	25	22.2	43.5	25.4	50.5	2.85	100	58	90	177	11	11	42	50	6
1 1/2"	40	34.9	43.5	38.1	50.5	2.85	125	71	103	197	14	14	50	70	7
2"	50	47.6	56.5	50.8	64	2.85	150	78	110	197	14	14	50	70	7
2 1/2"	65	60.3	70.5	63.5	77.5	2.85	190	100	150	267	17	17	70	102	9
3"	80	73	83.5	76.2	91	2.85	220	109	159	267	17	17	70	102	9
4"	100	97.6	110	102	119	2.85	270	140	212	400	22	22	-	102	-

CAVITY FILLED SEATS

Cavity filled seats are designed to eliminate the cavity around the ball, minimize trapped fluid in the valve body that can contaminate the process. Cavity Filled Seats offer excellent performance in control of food products, pharmaceuticals and high velocity applications. Maintenance seal kits are available on request.

Valve Details

Size	Flow CV	Torque Nm	Stem mm	ISO	KG (Approx.)		
					Clamp	OD Weld	
1/2"	15	18	6	9	F03-F04	0.69	0.65
3/4"	20	36	8	9	F03-F05	0.95	0.92
1"	25	48	14	11	F04-F05	1.46	1.31
1 1/2"	40	165	22	14	F05-F07	2.89	2.84
2"	50	207	32	14	F05-F07	4.35	4.25
2 1/2"	65	450	50	17	F07-F10	8.2	7.9
3"	80	780	75	17	F07-F10	11.6	11.35
4"	100	1360	115	22	F10	22.6	22

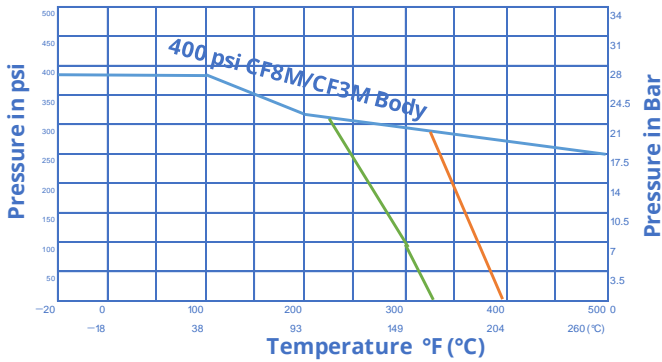
The torque figures do not include any safety factor and we recommend a minimum of 30% be added for actuation. Figures are based on 10 bar g clean water.

SERIES BV5519 Sanitary Ball Valve – Clamp Ends to BS4825

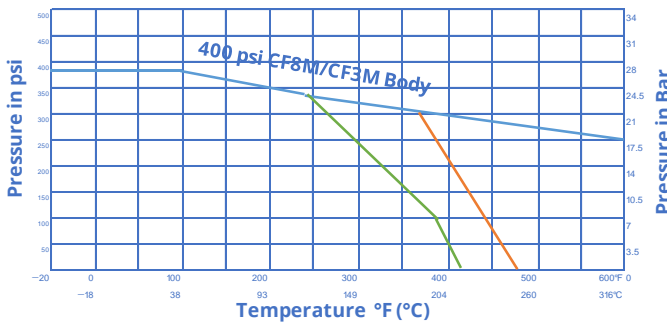
Technical Information

Pressure - Temperature Ratings

The pressure temperature data of ball valves is determined not only by valve shell materials, but by the sealing materials used for ball valve seats, gland packings and flange gaskets.



Floating Ball Valves, 400 psi
DN15 - DN32
Full bore 1/2"-1 1/4"



Floating Ball Valves, 400 psi
DN15 - DN32
Full bore 1 1/2"- 4"

Torque Values

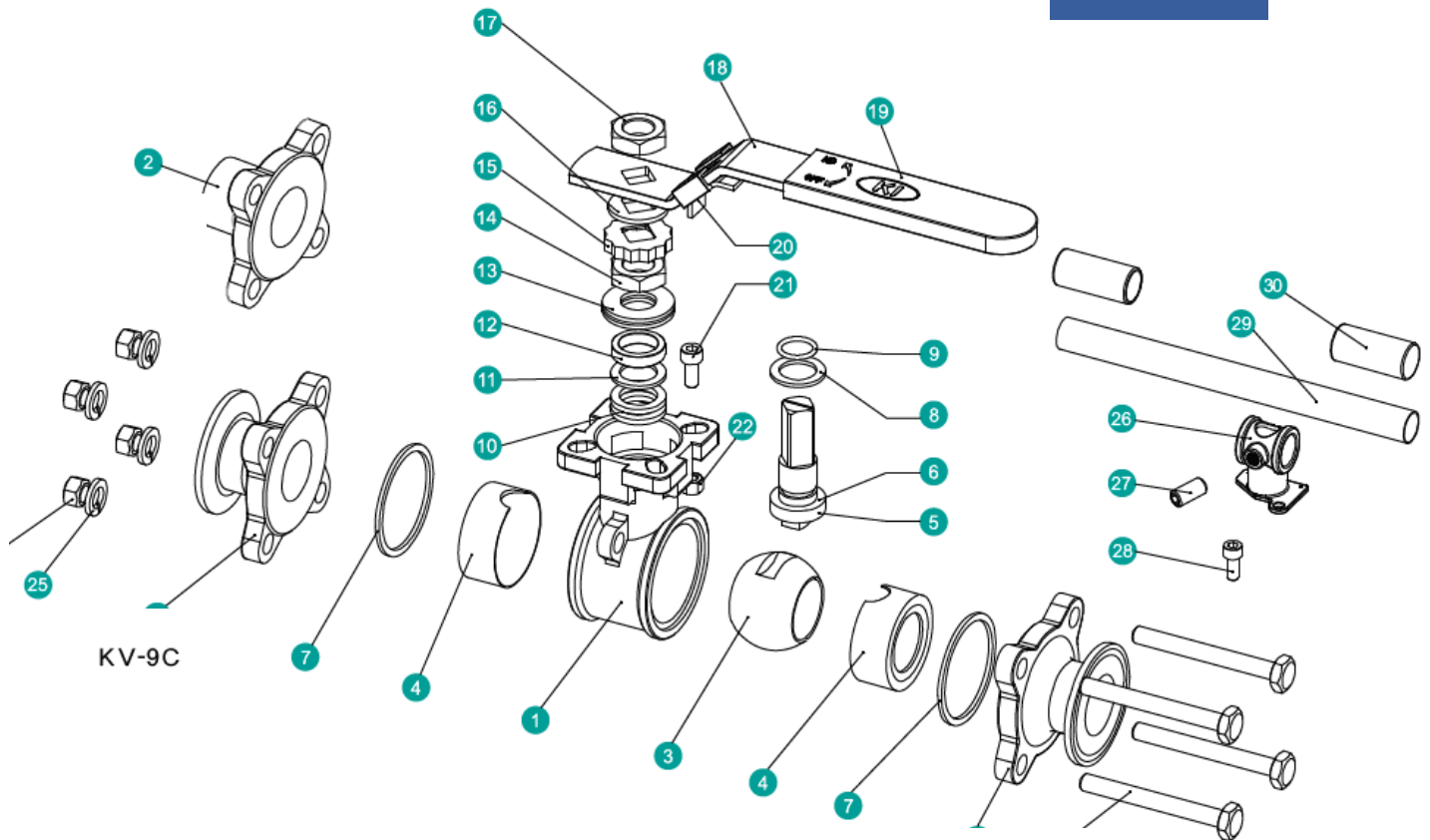
Close to Open torque at various differential pressure ΔP , standard seats TFM 1600

Size ΔP		75 psi		75 psi		75 psi		75 psi	
		5 Bar		5 Bar		5 Bar		5 Bar	
Inch	DN	N-m	in-lb	N-m	in-lb	N-m	in-lb	N-m	in-lb
1/2"	15	5	44	5	44	5	44	5	44
3/4"	20	6	53	6	53	6	53	6	53
1"	25	10	88	10	88	11	97	11	97
1 1/2"	40	19	168	19	168	22	195	24	212
2"	50	25	221	29	257	32	283	34	301
2 1/2"	65	40	354	45	398	49	434	52	460
3"	80	65	575	72	637	81	717	88	779
4"	100	100	885	110	973	122	1080	132	1168

Notes

Please include a minimum of 30% safety factor when sizing for actuators.

All information is sourced from our manufacturer's data and is intended for guidance only - Valves Online can accept no liability for changes, omissions or errors.



MATERIAL OF CONSTRUCTION

NO.	PART NAME	MATERIALS		
		CF3M(1.4409)	CF8M(1.4408)	CF8(1.4308)
1	Body	CF3M(1.4409)	CF8M(1.4408)	CF8(1.4308)
2	End Cap (Clamp)	CF3M(1.4409)	CF8M(1.4408)	CF8(1.4308)
	End Cap (BW)	CF3M(1.4409)	CF3M(1.4409)	CF8(1.4308)
3	Ball	CF3M	CF8M	CF8
4	Ball Seat		PTFE/TFM1600	
5	Stem	316L	316	304
6	Anti-Static	316L	316	304
7	Body Gasket		PTFE	
8	Thrust washer		PTFE	
9	O-Ring		FKM	
10	Packing		PTFE	
11	Bushing		304	
12	Gland		316	
13	Belleville Washer		301	
14	Stem Nut		A194-8	
15	Stop-lock-Cap		304	
16	Handle Gland		304	
17	Handle Nut (NPS $\frac{1}{2}$ -NPS3)		A194-8	
18	Handle (NPS $\frac{1}{2}$ -NPS3)		304	
19	Handle Sleeve (NPS $\frac{1}{2}$ -NPS3)		VINYL PLASTIC	
20	Lock Device (NPS $\frac{1}{2}$ -NPS3)		304	
21	Stop Bolt		A2-70	
22	Stop Nut		A2-70	
23	Bolting		A193-B8/A2-70	
24	Bolt Nut		A194-8/A2-70	
25	Bolt Washer		304	
26	Handle Adapter (NPS4)		A351-CF8	
27	Set Screwed (NPS4)		A2-70	
28	Bolting (NPS4)		A2-70	
29	Pipe Handle (NPS4)		A53+PLATED Zn	
30	Handle Sleeve (NPS4)		VINYL PLASTIC	

All information is sourced from our manufacturer's data and is intended for guidance only - Valves Online can accept no liability for changes, omissions or errors.