





SKU: CV5177

-  VOLT Dual Plate Check Valve – Cast Iron Body
-  VOLT Doppelrückschlagklappe- Gusskörper
-  VOLT Placa de doble válvula de retención - Hierro Fundido Cuerpo
-  VOLT Double Plate Clapet anti-retour - Fonte Corps

Valves[™]
O N L I N E

- 2" - 24" Cast Iron Spring Loaded Dual Plate Check Valve
- 2" - 24" Cast Iron Spring Loaded Doppelrückschlagklappe
- 2" - 24" Hierro fundido por resorte de doble placa de la válvula de retención
- 2" - 24" Cast Iron Spring Loaded double Plate Clapet anti-retour

Cast Iron Dual Plate Check Valve

STAINLESS STEEL PLATES



Description

Dual Plate Check Valve with low pressure los. Spring Loaded for clean fluids, water and other non-particle media. The valve is shut tight at low pressures and should be mounted in between flanges according to EN 1092-1 type 11 form B – PN10/16 (former DIN 2501)



Beschreibung

Doppelflügel -Rückschlagventil mit geringem Druck los . Frühling für saubere Flüssigkeiten, Wasser und andere nicht-Partikelmediengeladen. Das Ventil ist dicht bei niedrigen Drücken nach EN 1092-1 Typ 11 Form B geschlossen und sollte zwischen Flanschen montiert werden - PN10 / 16 (früher DIN 2501)



Descripción

Placa de doble válvula de retención con la baja presión del los . Primavera Loaded para fluidos limpios , agua y otros medios de comunicación no- partículas. La válvula se cierra firmemente a bajas presiones y se debe montar entre bridas según EN 1092-1 tipo 11 forma B - PN10 / 16 (ex DIN 2501)



Description





Double Plate Clapet à basse pression los . Ressort pour des fluides propres , de l'eau et d'autres médias non - particules . La valve est bien fermée à de basses pressions et devrait être monté entre les brides selon EN 1092-1 Type 11 forme B - PN10 / 16 (ancien DIN 2501)

- **PN16 Rated**
- **-10° C to 120° C**
- **EPDM Seals**
- **Stainless Steel Plates**
- **WRAS Approved**

Description:

Dual Plate Valve for standard industrial and WRAS Applications. The Valve excellent flow characteristics especially on water duty. Seals are EPDM Temperature -10°C to 120°C.

WRAS
APPROVED
PRODUCT

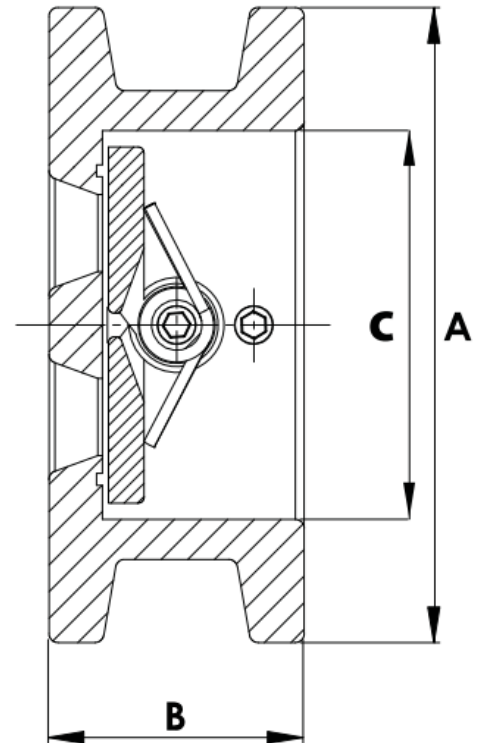
-  VOLT Dual Plate Check Valve – Cast Iron Body
-  VOLT Doppelrückschlagklappe- Gusskörper
-  VOLT Placa de doble válvula de retención - Hierro Fundido Cuerpo
-  VOLT Double Plate Clapet anti-retour - Fonte Corps

Dual Plate Wafer Check – WRAS - PN16

- **PN16 Rated**
- **-10° C to 120° C**
- **WRAS Approved**
- **Stainless Steel Plates**



Materials	
Body	Cast Iron
Disc	Stainless Steel 304
Seat	EPDM
Hinge Pin	Stainless Steel 420
Stop Pin	Stainless Steel 420
Pin Retainer	Stainless Steel 304
Spring	Stainless Steel 304
Washer	PTFE
Gasket	EPDM



Dimensions				
DN	A	B	C	Kg
2"	106	54	66	1.8
2 1/2"	126	54	78	2.4
3"	141	57	90	3.2
4"	161	64	115	4.8
5"	191	70	141	7.3
6"	217	76	170	10
8"	272	95	210	14.2
10"	327	108	273	23.6
12"	382	142	324	37.5
14"	442	184	356	62
16"	494	191	406	74
18"	554	203	457	100
20"	616	213	508	155
24"	733	222	600	215