



Cast Iron Check Valve EPDM Seat – PN16

- PN16 Rated
- -10°C to 120°C
- Fluids: Water
- Easy to Install
- EPDM Seat

Description:

A quality, robust and virtually maintenance free swing check valve. Environmentally friendly it is flanged to PN16. This economical check valve has a cast iron body and swing with EPDM soft seat and bolted bonnet. Particularly suited for water applications. Can be fitted in the horizontal position or in the vertical position with the flow going upwards. Closing tightness according to EN12334

- Hot and Cold water plant
- Neutral Fluids
- HVAC applications
- EPDM not suitable for oils and fats



Description

Flanged PN16 Cast Iron Swing Check Valve. Swing seat EPDM. Pressure / Temp in accordance with EN1092-2.1997
The valve has a low pressure drop and is full bore.
Temperature -10°C to 120°C



Beschreibung

Mit Flansch PN16 Gusseisen Rückschlagklappe . Schauksitz Gummi / EPDM . Druck / Temperatur in Übereinstimmung mit EN1092-2.1997
Das Ventil weist einen geringen Druckabfall und ist voll Bohrung .
Temperatur -10 ° C bis 120 ° C



Descripción

Con bridas PN16 Hierro fundido swing válvula de retención . Asiento de columpio de caucho / EPDM . Presión / Temp en conformidad con EN1092-2.1997
La válvula tiene una baja caída de presión y es de paso total .
Temperatura -10°C a 120°C



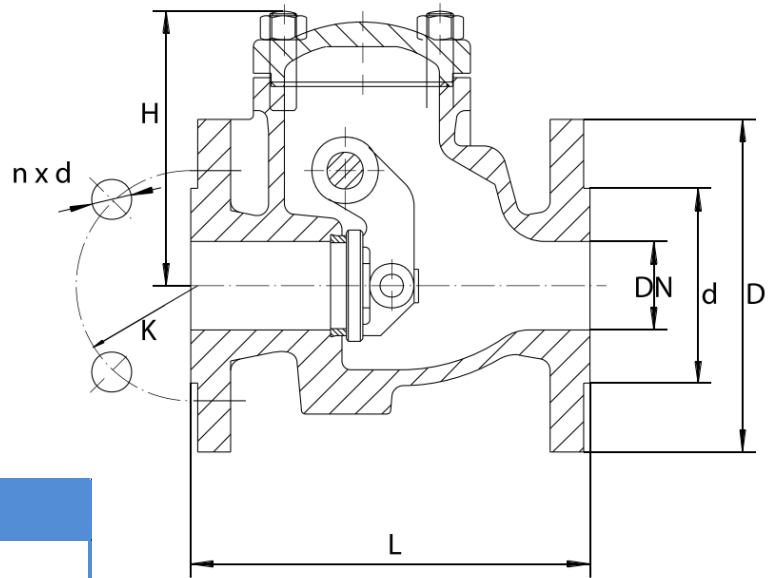
Description

Brides PN16 Fonte Balançoire Clapet . Siège de balançoire caoutchouc / EPDM . Pression / Temp conformément à EN1092-2.1997
La vanne a une faible chute de pression et est plein alésage .
Température -10°C à 120°C

CV5179

- SWING CHECK
- NON RETURN VALVE
- PN16 RATED
- EPDM SEAL
- -10°C to 120°C

EPDM Not suitable for oils and fats
Metal seat type CV5184



Material List

Item	Description	Material
1	Body	Cast Iron - EN-GJL-250
2	Bonnet	Cast Iron - EN-GJL-250
3	Hinge	Ductile Iron - EN-GJS-500-7
4	Flap	Ductile Iron - EN-GJS-500-7 + EPDM
5	Shaft / Disc Pin	X 20Cr13 1.4021
6	Seat	EPDM
7	Cover Gasket	Graphite - CrNiST



Dimensions

DN	Size	D	d	K	n x d	L	H	Kg
40	1 1/2"	150	84	110	19 x 4	180	119	9
50	2"	165	99	125	19 x 4	200	120	11
65	2 1/2"	185	118	145	19 x 4	240	141	15.2
80	3"	200	132	160	19 x 8	260	168	20.8
100	4"	220	156	180	19 x 8	300	175	31.5
125	5"	250	184	210	19 x 8	350	199	46
150	6"	285	211	240	23 x 8	400	217	60
200	8"	340	266	295	23 x 12	500	277	120
250	10"	405	319	355	28 x 12	600	337	180
300	12"	460	370	410	28 x 12	700	374	250

All information is sourced from our manufacturer's data and is intended for guidance only - Valves Online can accept no liability for changes, omissions or errors.