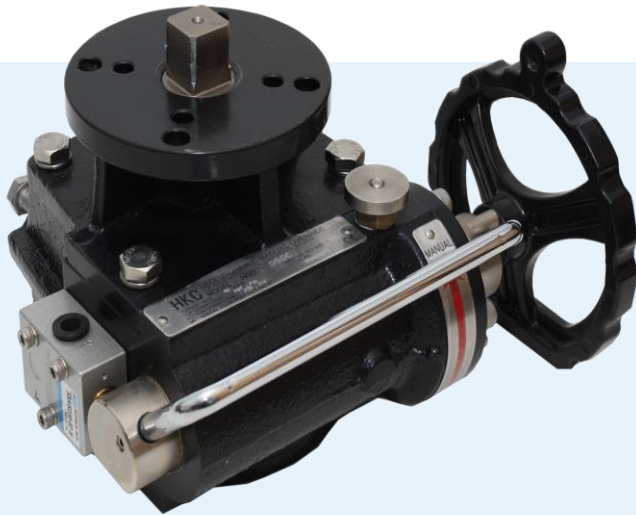


Declutchable Gearbox for Pneumatic Actuators



- Compact Design
- High Torque
- Mounting base standard to ISO5211
- Solid & tight sealing with O-ring system
- Weatherproof(IP67)
- Self-lubricated worm shaft guides provide
- Block and bleed valve to exhaust air

Description

Especially designed for manual operation of quarter turn valves with pneumatic actuators (both double acting or spring return). All gearboxes are of rugged construction and suitable for indoor and outdoor use.

They are designed for simple and reliable manual positioning of valves and dampers, the self-locking worm gear means safe and easy operation, positive manual positioning and long life.

A block and bleed valve is fitted to automatically exhaust air from the actuator in order to override the remote control system. The gearboxes can be used with any quarter turn actuator and may be installed in the field onto existing valves.



Description

A manual override gearbox with de-clutchable gear operator, offering a simple and reliable method of local manual operation. Used in conjunction with our HP or Volt range of pneumatic quarter turn actuators. A lightweight and modular designed provides an efficient and cost effective solutions.



Beschreibung

Ein manuelles Override-Getriebe mit entkuppelbarem Getriebeantrieb, das eine einfache und zuverlässige Methode der lokalen Handbedienung bietet. Verwendet in Verbindung mit unserer HP oder Volt Reihe von pneumatischen Drehantrieben. Ein leichtes und modulares Design sorgt für effiziente und kostengünstige Lösungen.



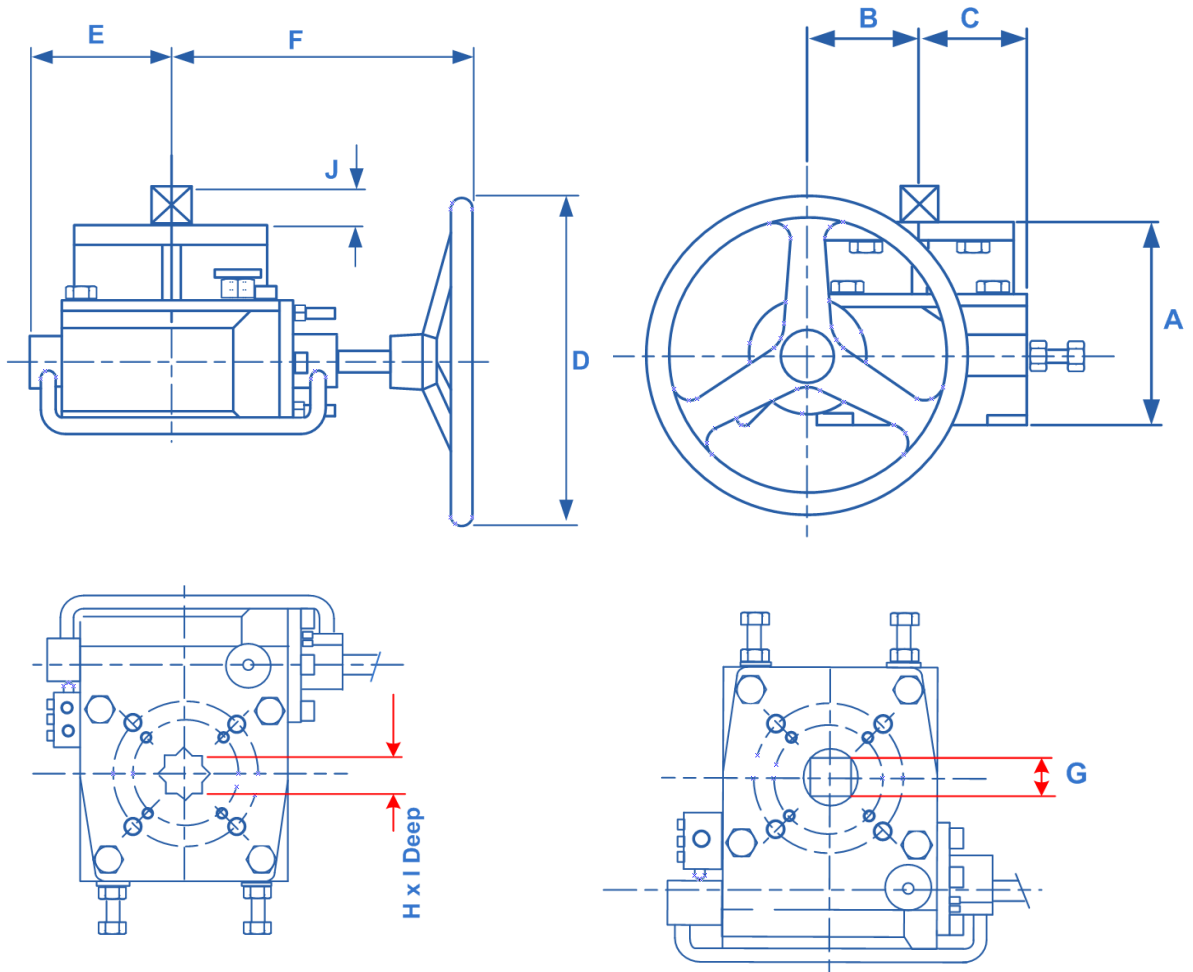
Descripción

Una caja de cambios manual con cambio de marchas, que ofrece un método simple y fiable de operación manual local. Utilizado junto con nuestra gama de actuadores de cuarto de vuelta neumáticos HP o Volt. Un diseño ligero y modular ofrece una eficiente y rentable soluciones.



Description

Une boîte de vitesses manuelle avec débrayable, offrant une méthode simple et fiable de fonctionnement manuel local. Utilisé conjointement avec notre gamme de servomoteurs pneumatiques quart de tour HP ou Volt. Un léger et modulaire conçu fournit des solutions efficaces et rentables.



- Compact Design
- High Torque
- Mounting base standard to ISO5211
- Solid & tight sealing with O-ring system
- Weatherproof(IP67)
- Self-lubricated worm shaft guides provide
- Block and bleed valve to exhaust air

DIMENSIONS													
Gearbox Operator Size	A	B	C	D	E	F	G	H	I	J	Weight (kg)	Bottom Coupling Flange	Top coupling flange
HGO 010	104	45	45	140	70	120	14	17	24	14	5	F05/F07	F05/F07
HGO 0150	148	70	75	200	97	175	17	22	36	18	16	F10/F12	F07/F12
HGO 080	154	70	75	300	97	200	27	27	36	26	17	F10/F12	F10/F12
HGO 0150	190	108	98	460	128	290	36	36	45	33	42	F14	F10/F14

Gearbox	Max. Output Torque (Nm)	HP Actuator	Bottom	Top
HGO 010	60	HP63 - HP75	F5/F7 17mm	F5/F7 14mm
HGO 050	250	HP88 - HP125	F10/F12 22mm	F7/F10 22mm
HGO 080	400	HP145 - HP160	F10/F12 27mm	F10/F12 27mm
HGO 150	750	HP180 - HP200	F14 36mm	F10/F14 36mm
RKS 125 Ket slot SR only	2500	HP211	F14 or F16 60mm Dia + Key	F14 or F16 SQ Order to Suit
RKE DA or SR	2500	HP211	F14 or F16 60mm Dia + Key	F14 or F16 SQ Order to Suit
RKS 125 Ket slot SR only	4000	HP212	F16 Keyway	F14 or F16 SQ Order to Suit

SPECIFICATION

Body	:	Cast Iron
Quadrant	:	Nodular Iron
Output Drive Shaft	:	Stainless steel
Rotation	:	OPEN when handwheel is turned anti-clockwise CLOSED when handwheel turned clockwise
Movement	:	Rotation 90° (Adjustable ±5° each end of stroke)
Finish	:	Black Epoxy Paint

For manual operation pull out the spring loaded plunger and rotate the clutch handle fully up for engagement to take place. To handle fully down. Clutch handle is shown in the dis-engaged position.

Dis-engage, pull out the spring loaded plunger and rotate the clutch