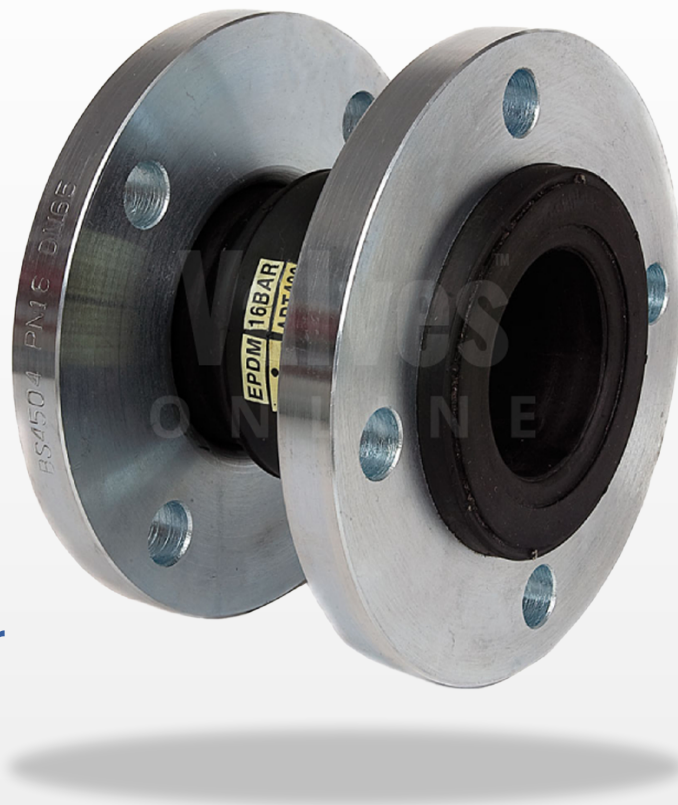


ECONOMY FLANGED PN16

FLEXIBLE BELLOWS

Key features:

- Reinforced EPDM body
- Zinc plated carbon steel flanges
- Flanges to PN16 BS4504
- Sizes available: 1¼" to 12"
- Working temperature range: -20°C to +100°C
- Maximum working pressure: 16 bar



DETAILS

This economy flexible connector features a reinforced EPDM body with zinc plated carbon steel PN16 flanges.

Available in sizes 1¼" to 12" with sizes up to 24" available on request.

The flanges are supplied in the swivel version, for ease of fitting.

Expansion joints are the perfect solution for pipe systems to absorb movements, vibrations or noise, resulting in the significantly prolonged service life of the pipe work and connected equipment.

The connector has a working temperature range of -20°C up to a maximum of +100°C and a maximum working pressure of 16 bar.

Available with NBR body on request.

ECONOMY FLANGED PN16

FLEXIBLE BELLOWS

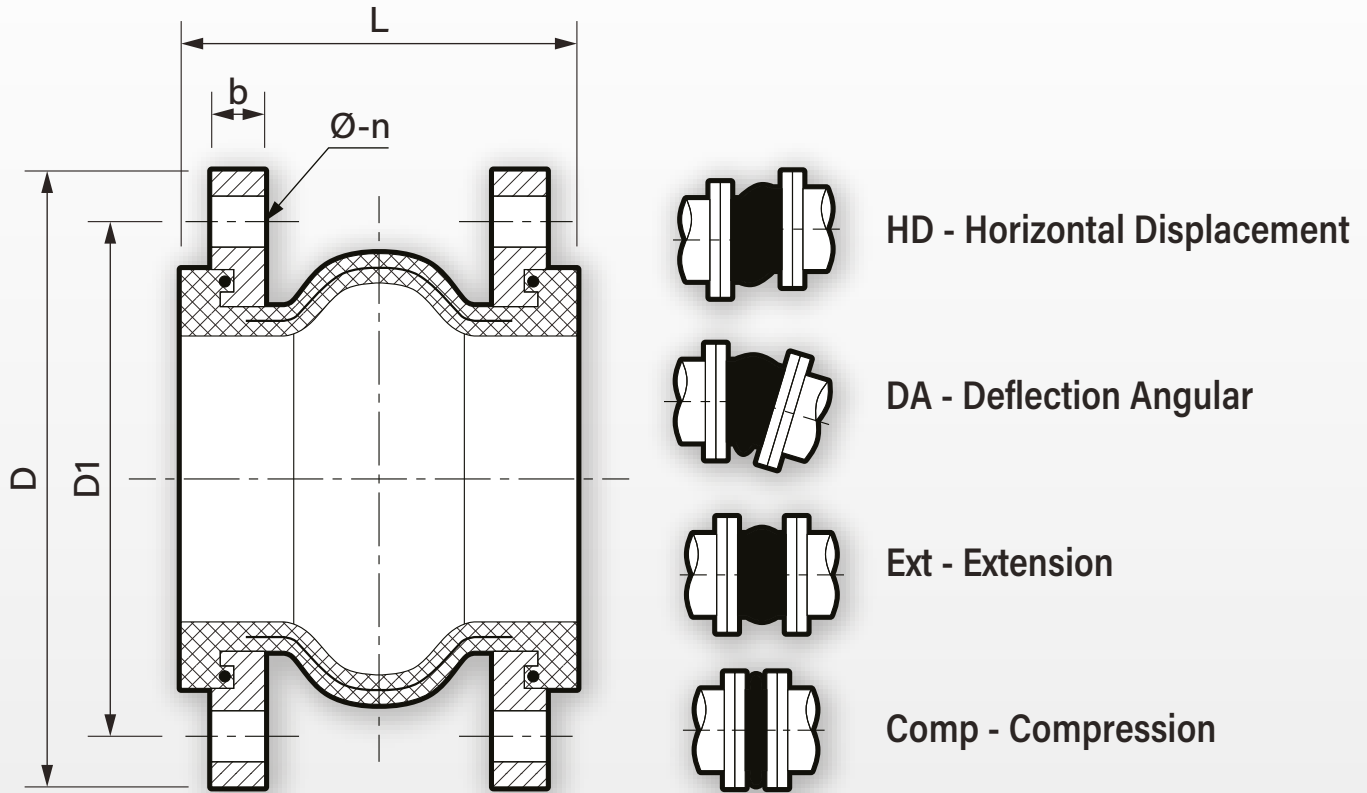


TABLE 1: DIMENSIONS IN MM

Size	D	D1	b	L	Ø-n	HD	DA	Ext	Comp	Weight
1¼"	140	100	16	130	18-4	12	15°	8	15	3.2 kg
1½"	150	110	16	130	18-4	12	15°	8	15	3.7 kg
2"	165	125	18	130	18-4	12	15°	8	15	5.0 kg
2½"	185	145	18	130	18-4	12	15°	8	15	6.1 kg
3"	200	160	20	130	18-8	12	15°	8	15	7.0 kg
4"	220	180	20	130	18-8	12	15°	8	15	8.5 kg
5"	250	210	22	130	18-8	12	15°	8	15	11.5 kg
6"	285	240	22	130	22-8	12	15°	8	15	14.4 kg
8"	340	295	24	130	22-12	12	15°	8	15	20.0 kg
10"	405	355	26	130	26-12	12	15°	8	15	26.0 kg
12"	460	410	28	130	26-12	12	15°	8	15	32.0 kg

Sizes up to 24" are available on request.

ECONOMY FLANGED PN16

FLEXIBLE BELLOWS

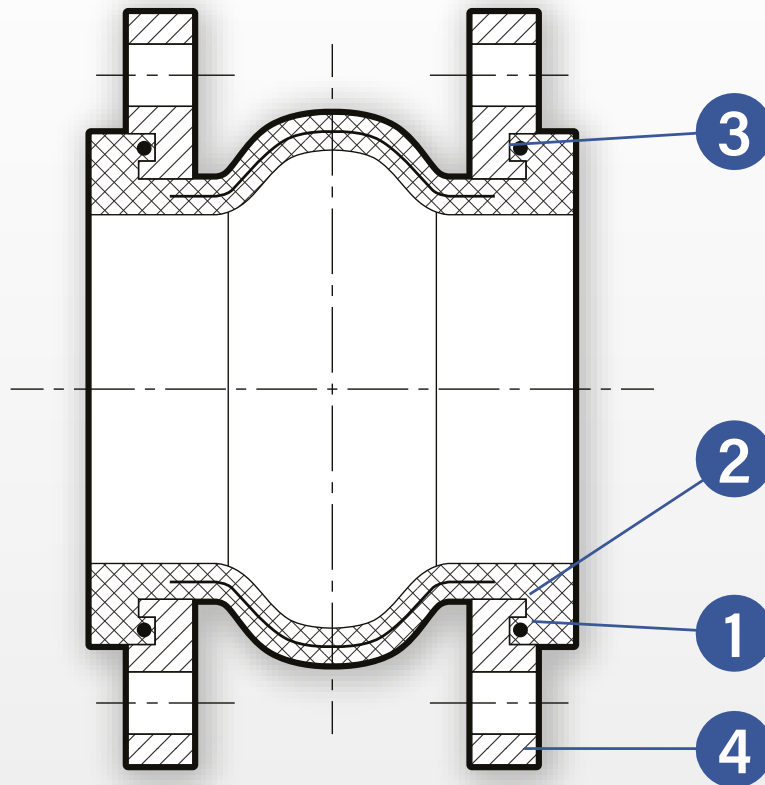


TABLE 2: PARTS AND MATERIALS

Item	Part Name	Material
1	Body	EPDM
2	Reinforcement	Nylon cord wire
3	Pressure ring	Steel wire
4	Flange	Carbon steel

ECONOMY FLANGED PN16

FLEXIBLE BELLOWS

CHART 1 : PRESSURE TEMPERATURE

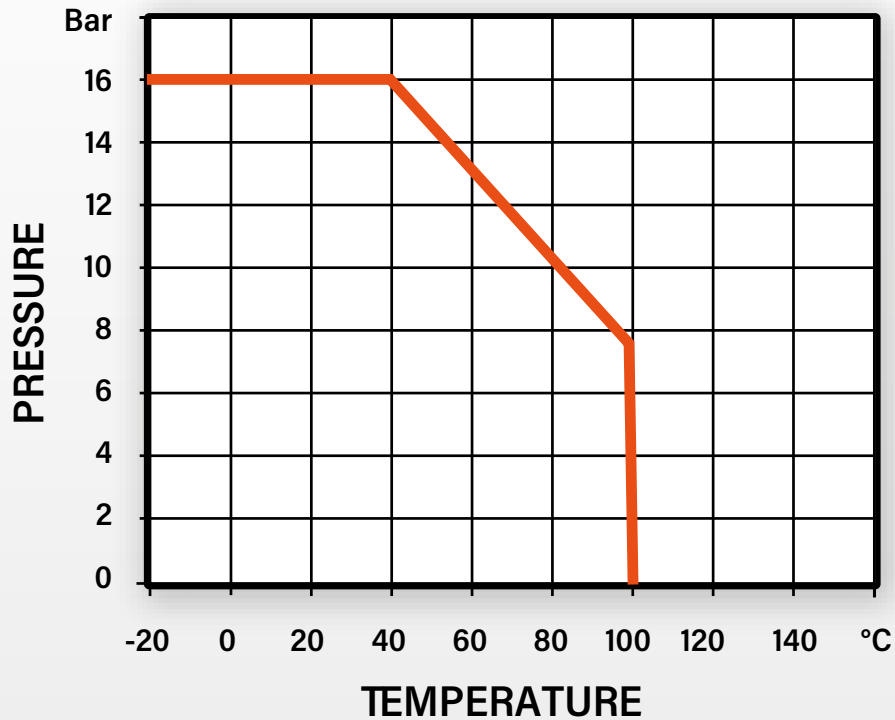


TABLE 3: PART NUMBERS
FLANGED PN16 FLEXIBLE CONNECTOR

Size	SKU
1¼"	EJ9839-100110
1½"	EJ9839-100111
2"	EJ9839-100112
2½"	EJ9839-100113
3"	EJ9839-100114
4"	EJ9839-100115
5"	EJ9839-100116
6"	EJ9839-100117
8"	EJ9839-100118
10"	EJ9839-100119
12"	EJ9839-100120