

## PN16/2 Weld Neck Flange in Stainless Steel-Schedule 10 or 40 Pipe

- Sizes ½" to 8" (DN15 – DN200)
- Pipe Options of Schedule 10 or 40
- BS EN 10204.3.1B Certificates Available
- Bolts and Gaskets Supplied to Suit
- 316L Stainless Steel
- Raised Face

### > Description

A choice of two flanges for either schedule 10S or 40S pipe. PN16 type 11 raised face, stainless steel, weld neck flange, conforming to EN1092-1 standard, (was BS4504).

Available in 316L with full material traceability and 3.1B certification upon request.

Sizes ½" to 1½" are the same dimensions on PN10/16/25/40.

Sizes 2" to 6" same dimensions on PN10/16.

Bolt kit sizes shown in the table are for bolting two flanges together including the thickness of a gasket. If using a wafer pattern valve, longer bolts will be required.

### > Schedule 10

PN16 type11 raised face schedule 10S weld neck flange.

Sizes ½" to 1½" same dimensions on PN10/16/25/40.

Sizes 2" to 6" same dimensions on PN10/16.

To EN 1092-1 Standard.

BS EN 10204 3.1B certificates available.

### > Schedule 40

PN16 type 11 raised face schedule 40S weld neck flange.

Sizes ½" to 1½" same dimensions on PN10/16/25/40.

Sizes 2" to 6" nominal bore (DN15 to DN150).

150LB raised face weld neck flange SCH 40S 316L

To EN 1092-1 Standard.

BS EN 10204 3.1B certificates available.



### Description

A 316L Stainless Steel PN16 type 11 flange for welding, conforming to EN1092-1. Sizes from ½" (DN15) to 8" (DN200). Full traceability and 3.1B certificates can be provided.

A choice of flange suitable for schedule 10 or 40.



### Beschreibung

Ein Flansch aus Edelstahl PN6 Typ 11 aus Edelstahl 316L zum Schweißen gemäß EN1092-1. Größen von ½ "(DN15) bis 8" (DN200). Volle Rückverfolgbarkeit und 3.1B-Zertifikate können bereitgestellt werden.

Eine Auswahl an Flanschen, die für Zeitplan 10 oder 40 geeignet sind.



### Descripción

Una brida de acero inoxidable 316L PN16 tipo 11 para soldar, conforme a EN1092-1. Tamaños desde ½" (DN15) hasta 8" (DN200). Se pueden proporcionar trazabilidad completa y certificados 3.1B.

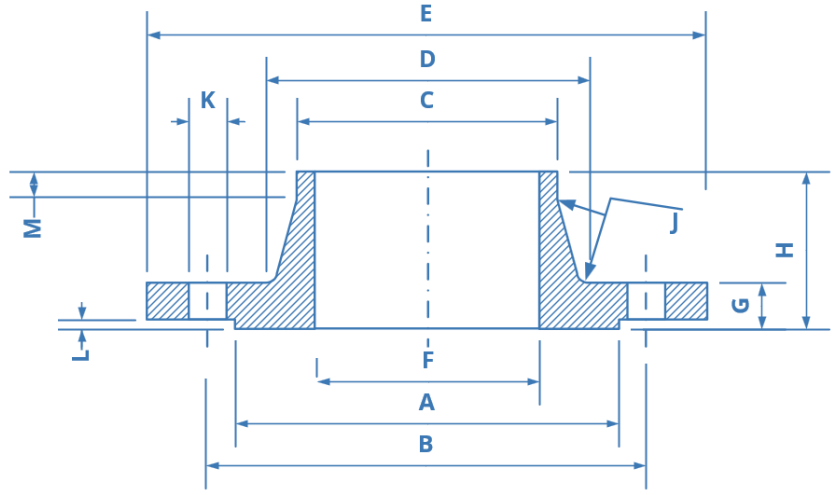
Una opción de brida adecuada para cédula 10 o 40.



### Description

Une bride à souder en Inox 316L PN16 type 11 conforme à la norme EN1092-1. Tailles de ½" (DN15) à 8" (DN200). Une traçabilité complète et des certificats 3.1B peuvent être fournis.

Un choix de bride adaptée au schedule 10 ou 40.



PN16/2 Weld Neck Flange Schedule 10 & 40 in 316L

Pipe Size	DN	SCH 10	SCH 40	A	B	C	D	E	F SCH10	F SCH40	G	H	J	K	L	M	Bolt	KG	Bolt Kit
1/2"	15	F1620.5	F1620.5/S40	45	65	21.3	32	95	17.3	15.8	14	35	3	14	3	6	4 x M12	0.65	BK03
3/4"	20	F1620.75	F1620.75/S40	58	75	26.9	39	105	22.3	21.2	16	38	4	14	3	6	4 x M12	0.95	BK03
1"	25	F1621.0	F1621.0/S40	68	85	33.7	46	115	28.5	26.9	16	38	4	14	3	6	4 x M12	1.14	BK03
1 1/4"	32	F16201.25	F16201.25/S40	78	100	42.4	56	150	36.6	35.3	16	40	5	18	3	6	4 x M16	1.69	BK04
1 1/2"	40	F1621.5	F1621.5/S40	88	110	48.3	67	150	43.1	40.9	18	42	5	18	3	7	4 x M16	1.86	BK04
2"	50	F1622.0	F1622.0/S40	102	125	60.3	74	165	54.5	52.5	18	45	5	18	3	8	4 x M16	2.53	BK04
2 1/2"	65	F1622.5	F1622.5/S40	122	145	76.1	92	185	70.3	65.8	18	45	6	18	3	10	4 x M16	3.06	BK04
2 1/2"	65	F1622.5 8 Hole	F1622.5/S40 8 Hole	122	145	76.1	92	185	70.3	65.8	18	45	6	18	3	10	8 x M16	3.06	BK05
3"	80	F1623.0	F1623.0/S40	138	160	88.9	110	200	82.5	77.9	20	50	6	18	3	10	8 x M16	3.7	BK07
4"	100	F1624.0	F1624.0/S40	158	180	114.3	130	220	107.1	102.3	20	52	6	18	3	12	8 x M16	4.62	BK07
5"	125	F1625.0	F1625.0/S40	188	210	139.7	158	250	131.7	128.2	22	55	6	18	3	12	8 x M16	6.3	BK07
6"	150	F1626.0	F1626.0/S40	212	240	168.3	184	285	159.3	154.1	22	55	8	22	3	12	8 x M20	7.75	BK10
8"	200	F1628.0	F1628.0/S40	268	295	219.1	265	340	211.58	202.74	24	62	8	22	3	12	12 x M20	11	BK11



➤ Other Flanges in Stock

➤ Gaskets and Bolt Sets

