



Pneumatic Actuated Carbon Steel ANSI 150 Ball Valve

- Double Acting or Spring Closed/Open
- Carbon Steel Body WBC – Full Bore
- DN15-DN100 / 1/2" - 4"
- ATEX Approval on valve and actuator
- Many Options Offered
- PTFE Seats



Description

A well proven full bore flanged ball valve, that's fitted onto our pneumatic actuator, that is offered in both single and double acting options. Sizes range from 1/2" - 4" DN15-DN100. PTFE Fire seats as standard. Actuators are designed to the latest ISO/Namur standards and the ball valves have mounting platforms that enable the units to be fitted without brackets.



Beschreibung

Ein bewährter Vollbohr-Flansch-Kugelhahn, der auf unseren pneumatischen Antrieb montiert ist, der sowohl in ein- als auch in doppeltwirkenden Optionen angeboten wird. Größen von 1/2" - 4" DN15-DN100. PTFE-Feuersitze serienmäßig. Die Stellantriebe sind nach den neuesten ISO / Namur-Normen ausgelegt und die Kugelhähne verfügen über Montageplattformen, die es ermöglichen, die Geräte ohne Halterungen einzubauen.



Descripción

Una válvula de bola con brida de agujero completo, probada, que está montada en nuestro actuador neumático, que se ofrece en ambas opciones de simple y doble efecto. Los tamaños van desde 1/2"- 4" DN15-DN100. PTFE Asientos de fuego de serie. Los actuadores están diseñados según las últimas normas ISO / Namur y las válvulas de bola tienen plataformas de montaje que permiten montar las unidades sin soportes.



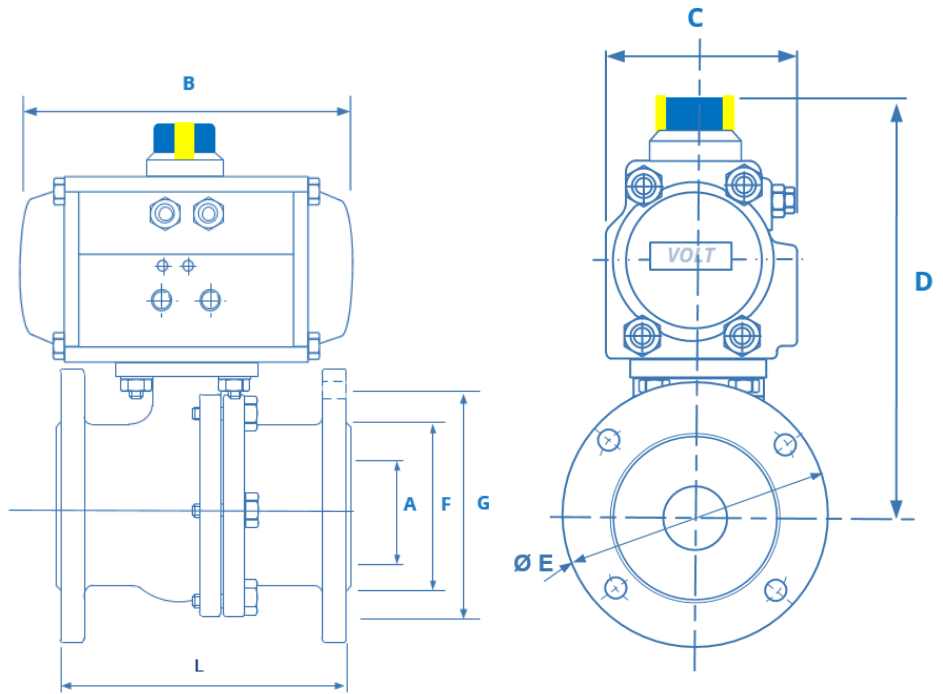
Description

Une vanne à bille à bride pleine perforée, bien éprouvée, qui est montée sur notre actionneur pneumatique. Ceci est offert en option à simple ou double action. Les tailles sont comprises entre 1/2" - 4" DN15-DN100. Sièges d'incendie PTFE en standard. Les actionneurs sont conçus selon les normes ISO / Namur les plus récentes et les vannes à bille ont des plates-formes de montage qui permettent d'installer les unités sans supports.

Description

A well engineered combination of a powerful pneumatic actuator, fitted to our heavy duty high performance, flanged ANSI-150 ball valve. The valve comprises of a split 2- piece body with PTFE seats. The Pneumatic actuator offers single acting (fail closed or open) or Double acting options. Sized on 5.5 bar pilot air supply with 30% added safety factor. This unit gives you an exceptional combination, that's trouble free. We offer the valve in Stainless Steel or Carbon Steel with seat permutations and various accessories that can be fitted onto the actuator such as de-clutchable gearboxes, switch boxes, solenoids and positioners.





TORQUE FIGURES

Valve Size		Break Away Torque PTFE Seats	C.v.
Size	DN	Nm	G.P.M
1/2"	15	5.5	28
3/4"	20	7.2	50
1"	25	8.8	95
1 1/4"	32	13	132
1 1/2"	40	20	260
2"	50	24	485
2 1/2"	65	54	800
3"	80	62	1250
4"	100	124	2250

ANSI 150 Double Acting Dimensions

Size	DA Act.	L	B	C	D	E	A	F	G	Weight Kg
1/2"	HP50D	108	144	72	141	89	15	35	60.5	3.26
3/4"	HP50D	117	144	72	146	98	20	43	70	3.28
1"	HP50D	127	144	72	166	108	25	51	79.5	3.56
1 1/4"	HP63D	140	163	85	178	117	32	64	89	4.68
1 1/2"	HP63D	165	163	85	183	127	40	73	98.5	5.3
2"	HP66D	178	202	85	192	152	50	92	120.5	8.5
2 1/2"	HP88D	190	247	108	229.5	178	65	105	139.5	18.3
3"	HP88D	203	247	108	239	190	80	127	152.5	22.3
4"	HP115D	229	316	141	298	229	100	157	190.5	35

Double Acting
Requires 5.5 bar pilot air to open and close. A 4/2 - 5/2 pilot solenoid valve is needed to operate the valve

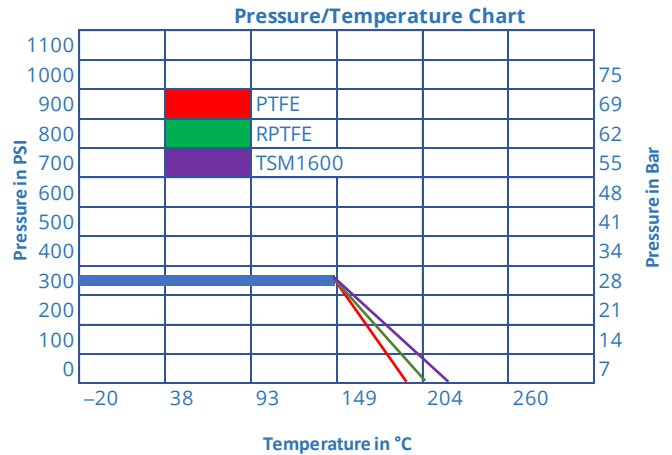
ANSI 150 Spring Return Dimensions

Size	SR Act.	L	B	C	D	E	A	F	G	Weight Kg
1/2"	HP50S	108	144	72	141	89	15	35	60.5	3.3
3/4"	HP50S	117	144	72	146	98	20	43	70	4.5
1"	HP63S	127	163	85	166	108	25	51	79.5	5.4
1 1/4"	HP66S	140	202	85	178	117	32	64	89	7.7
1 1/2"	HP75S	165	210	96	200	127	40	73	98.5	9.9
2"	HP88S	178	247	108	221	152	50	92	120.5	13.9
2 1/2"	HP100S	190	268	123	241.5	178	65	105	139.5	20
3"	HP115S	203	316	141	269	190	80	127	152.5	27
4"	HP125S	229	347	151	311	229	100	157	190.5	37.3

Spring Return
Requires 5.5 bar pilot air to open the actuator. A 3/2 pilot solenoid valve is needed to operate the valve

Technical - Actuator

Body material	Hard anodised extruded aluminium alloy
End Caps	Die cast aluminium epoxy coated
Spring	High tensile steel
Indicator	Open/Closed
Pinion shaft	Alloy steel nickle plated
Pinion Guides	Self Lubricating Polypropylene + GF
Piston seals	NBR steel
Specification	
Pressure range	10 Bar, pilot pressure 5.5 - 8 Bar
Double acting	2.5 Bar - 8 Bar
Single acting - Open or Close	2.5 Bar - 8 Bar
Temperature range	minus 20°C - 80°C
Movement	90 Degree adjustable -5-+5 Degree
Lubrication	All moving parts are lubricated
Cycle Life	1,000,000 operations
Approvals	ATEX, CE, PED



Valve Specification

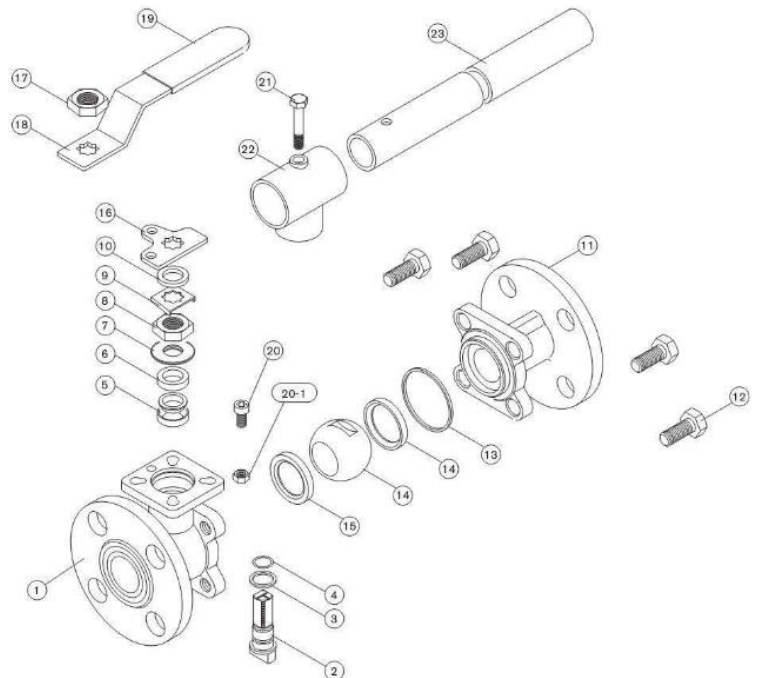
Orifice	1/2"-4" (DN15-DN100)
Valve Design	ASME B16.34, EN12516-1
Steel Casting	MSS SP-55, EN 12680-1/MSS SP-55
Face to Face	ASME B16.10, DIN 3202 F4
Flange Connection	ASME B16.50, DIN 2633
Pressure Test	598 (ISO 5208), EN12266-1 (ISO 5208)
Mounting	ISO 5211 Direct Mount
Valve Body	ASTM A351 CF8M / DIN 1.4408
Material	ASTM A216 WCB / DIN 1.0619
Seat Material	PTFE

Valve / Actuator Sizing

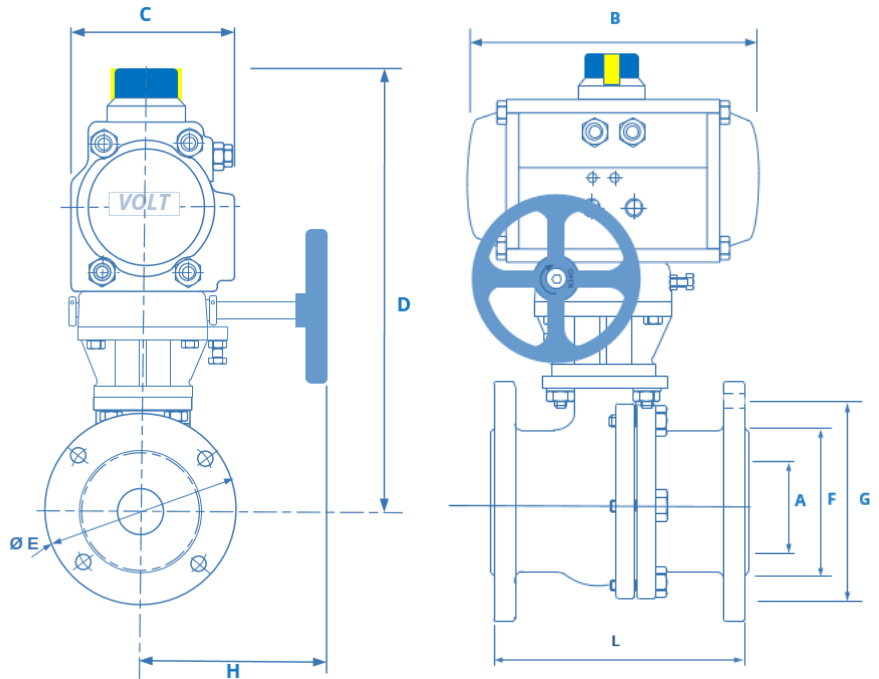
THE VALVE AND ACTUATOR COMBINATION HAS BEEN SIZED WITH A MAXIMUM OF 10 BAR (150 PSI) (clean water) MEDIUM LINE PRESSURE AND BASED ON A MINIMUM OF 5.5 BAR (80 PSI) PILOT AIR PRESSURE. SEE GRAPH. FOR HIGHER PRESSURES PLEASE CONTACT SALES WHO WILL ACCOMMODATE YOUR REQUIREMENTS, QUICKLY AND EASILY.

Valve Materials

No	Part Name	Material
1	Body	CF8M / WCB
2	Stem	SUS304
3	Thrust washer	RPTFE
4	O-Ring	PTFE
5	Stem Packing	PTFE
6	Gland	SS 304
7	Disc Washer	SS 301
8	Stem Nut	SS304
9	Nut Stop	SS304
10	Washer	SS304
11	Flanged end	CF8M / WCB
12	Bolt	SS304
13	Gasket	PTFE
14	Ball	SS316
15	Ball Seat	PTFE
16	Stopper Plate	SUS304
17	Handle Nut	SS304
18	Handle	SS304
19	Sleeve	Plastic
20	Stop Pin	SUS304
21	Ste Bolt	SUS304
22	Lever Head	CF8M / WCB
23	Pipe Handle	Steel Pipe



With De-Clutch Gearbox



ANSI 150 Double Acting Dimensions										Weight Kg
Size	DA Act.	L	B	C	D	E	A	F	G	
1/2"	HP50D	108	144	72	141	89	15	35	60.5	5.2
3/4"	HP50D	117	144	72	146	98	20	43	70	5.5
1"	HP50D	127	144	72	316	108	25	51	79.5	5.9
1 1/4"	HP63D	140	163	85	328	117	32	64	89	4.8
1 1/2"	HP63D	165	163	85	333	127	40	73	98.5	5.9
2"	HP66D	178	202	85	342	152	50	92	120.5	11.5
2 1/2"	HP88D	190	247	108	379.5	178	65	105	139.5	22.3
3"	HP88D	203	247	108	389	190	80	127	152.5	26.8
4"	HP115D	229	316	141	448	229	100	157	190.5	40.5



ANSI 150 Spring Return Dimensions										Weight Kg
Size	SR Act.	L	B	C	D	E	A	F	G	
1/2"	HP50S	108	144	72	141	89	15	35	60.5	5.6
3/4"	HP50S	117	144	72	146	98	20	43	70	6.5
1"	HP63S	127	163	85	316	108	25	51	79.5	7.4
1 1/4"	HP66S	140	202	85	328	117	32	64	89	10.7
1 1/2"	HP75S	165	210	96	250	127	40	73	98.5	12.8
2"	HP88S	178	247	108	371	152	50	92	120.5	16.8
2 1/2"	HP100S	190	268	123	391.5	178	65	105	139.5	24
3"	HP115S	203	316	141	419	190	80	127	152.5	31
4"	HP125S	229	347	151	461	229	100	157	190.5	41.5



Optional extras

We can offer this unit with additions of De-Clutchable gearboxes, Pilot Solenoids, Switchboxes or Combined switchbox and Solenoid.