

## Pneumatic Actuated Stainless Steel ANSI 150 Ball Valve

- Double Acting or Spring Closed/Open
- Stainless Steel Body CF8M – Full Bore
- DN15-DN100 / 1/2" - 4"
- ATEX Approval on Valve and Actuator
- Many Options Offered
- TFM1600 Seats
- Fire-Safe Design API607 5<sup>th</sup> Edition
- Anti-Static Device Fitted

### Description

A well-engineered combination, of a powerful ATEX Approved pneumatic actuator. Fitted to a heavy-duty, high performance, flanged ANSI150 stainless-steel, full-bore ball valve. The valve comprises of a split 2- piece body with TFM1600 seals, Firesafe design and Anti-Static . The Pneumatic actuator offers options for both single acting (fail closed or open) or Double acting variants. Sized on a 5.5 bar pilot air supply and sized on wet duty with 30% added safety factor. The unit gives an exceptional combination, that's robust and trouble free. We offer the valve in options of both Stainless Steel and Carbon Steel with choices for seat permutations. Various accessories can be fitted onto the actuator such as de-clutchable gearboxes, switch boxes, solenoids, and positioners.

**Actuator** : ATEX Approved

**Valve** : Fire-Safe Design API 607 5<sup>th</sup> Edition  
Anti-Static Device



### Description

A well proven stainless steel, full bore, flanged ANSI150 ball valve, that's fitted onto our pneumatic actuator. Offered in both Single and Double acting options. Sizes range from 1/2" - 4" (DN15-DN100). TFM1600 seals as standard. Actuators are designed to the latest ISO/ Namur standards and the ball valves have mounting platforms that enable the units to be fitted directly. Valve is Firesafe Design and Anti static device fitted.



### Beschreibung

Ein bewährter Edelstahl-Kugelhahn mit vollem Durchgang und Flansch ANSI150, der an unserem pneumatischen Stelltrieb angebracht ist. Angeboten in einfach- und doppelwirkenden Optionen. Die Größen reichen von 1/2" - 4" (DN15-DN100). TFM1600-Dichtungen als Standard. Die Stellantriebe sind nach den neuesten ISO/Namur-Normen ausgelegt und die Kugelhähne haben Montageplattformen, die eine direkte Montage der Einheiten ermöglichen. Das Ventil ist mit einem Firesafe-Design und einer antistatischen Vorrichtung ausgestattet.



### Descripción

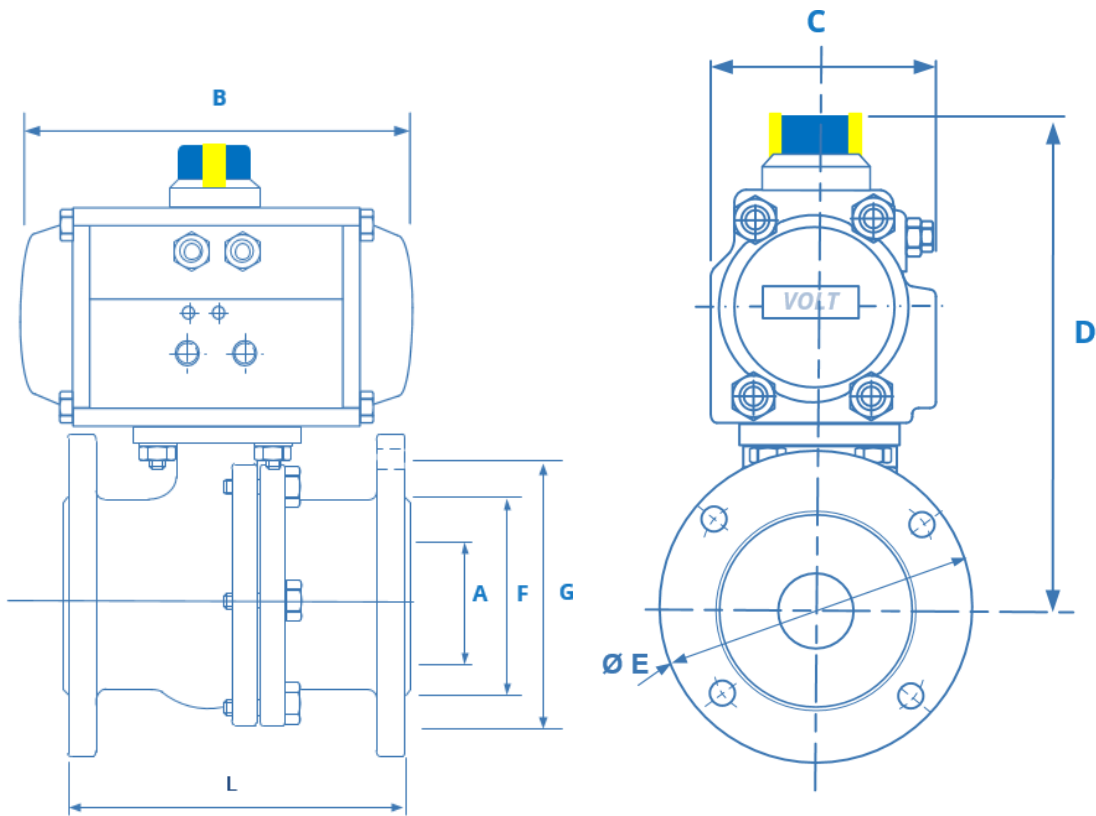
Una válvula de bola ANSI150 bridada, paso total, de acero inoxidable, bien probada, que se instala en nuestro actuador neumático. Se ofrece en opciones de acción simple y doble. Los tamaños varían de 1/2" a 4" (DN15-DN100). Sellos TFM1600 como estándar. Los actuadores están diseñados según los últimos estándares ISO/ Namur y las válvulas de bola tienen plataformas de montaje que permiten que las unidades se instalen directamente. La válvula tiene un diseño a prueba de incendios y un dispositivo antiestático instalado.



### Description

Une vanne à boisseau sphérique ANSI150 à passage intégral, en acier inoxydable éprouvée, montée sur notre actionneur pneumatique. Offert en options à simple et double effet. Les tailles vont de 1/2" à 4" (DN15-DN100). Joints TFM1600 en standard. Les actionneurs sont conçus selon les dernières normes ISO/Namur et les vannes à boisseau sphérique ont des plates-formes de montage qui permettent de monter directement les unités. La vanne est de conception Firesafe et dispose d'un dispositif antiestatique.

# PA5503



## ANSI 150 Double Acting Dimensions

Size	DA Act.	L	B	C	D	E	A	F	G	Weight Kg
1/2"	HP50D	108	144	72	141	89	15	35	60.5	3.26
3/4"	HP50D	117	144	72	146	98	20	43	70	4.2
1"	HP63D	127	163	85	176	108	25	51	79.5	5.5
1 1/4"	HP63D	140	163	85	178	117	32	64	89	6.6
1 1/2"	HP66D	165	202	85	183	127	40	73	98.5	8.6
2"	HP75D	178	210	96	209	152	50	92	120.5	12.3
2 1/2"	HP100D	190	268	123	241.5	178	65	105	139.5	20.2
3"	HP115D	203	316	141	269	190	80	127	152.5	27.3
4"	HP145D	229	414	172	341	229	100	157	190.5	49

## ANSI 150 Spring Return Dimensions

Size	SR Act.	L	B	C	D	E	A	F	G	Weight Kg
1/2"	HP50S	108	144	72	141	89	15	35	60.5	3.3
3/4"	HP63S	117	163	85	208	98	20	43	70	4.5
1"	HP66S	127	202	85	200	108	25	51	79.5	5.4
1 1/4"	HP75S	140	210	96	200	117	32	64	89	7.7
1 1/2"	HP88S	165	247	108	221	127	40	73	98.5	11.3
2"	HP88S	178	247	108	221	152	50	92	120.5	13.9
2 1/2"	HP125S	190	347	151	275	178	65	105	139.5	26.5
3"	HP145S	203	414	172	312	190	80	127	152.5	37
4"	HP180S	229	497	206	383	229	100	157	190.5	64

Mounting Kit

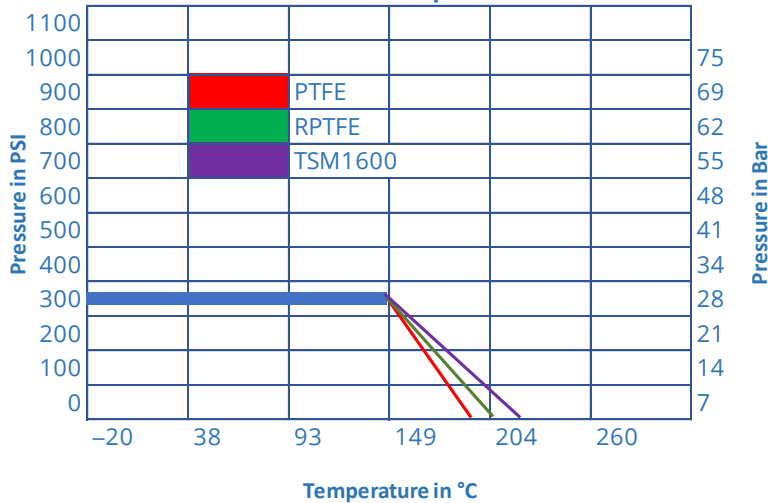
All information is sourced from our manufacturer's data and is intended for guidance only - Valves Online can accept no liability for changes, omissions or errors.

# PA5503

## Valve Specification

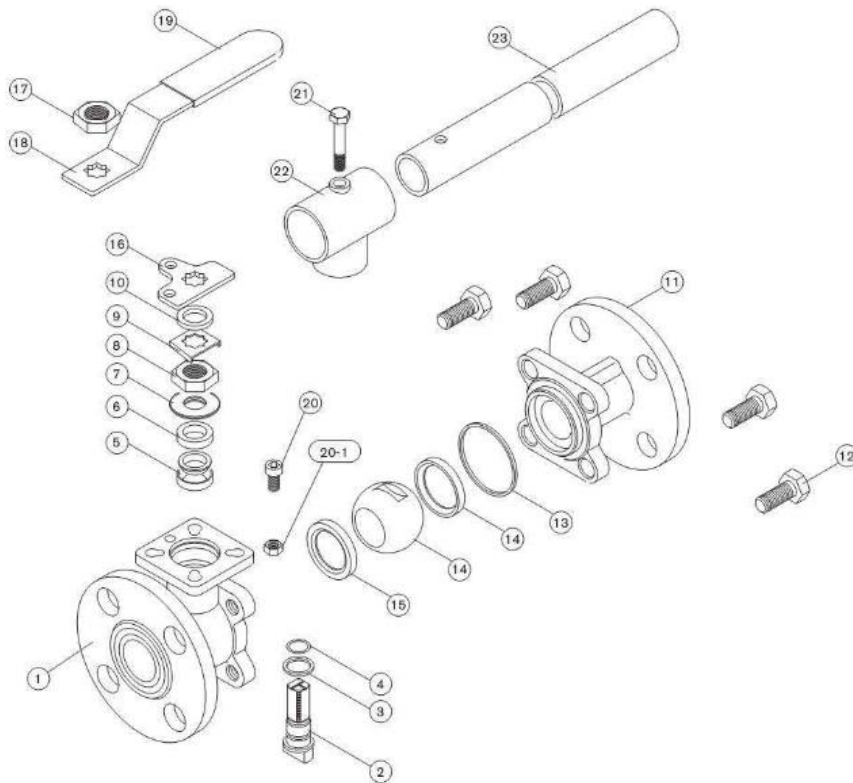
Orifice	1/2"- 4" (DN15-DN100)
Valve Design	ANSI150-ASME B16.34, PN16-EN12516-1
Steel Casting	MSS SP-55, EN 12680-1/MSS SP-55
Face to Face	ANSI150-ASME B16.10, PN16-DIN 3202 F4
Flange Connection	ANSI150-ASME B16.50, PN16-DIN 2633
Pressure Test	598 (ISO 5208), EN12266-1 (ISO 5208)
Mounting	ISO 5211 Direct Mount
Valve Body Material	ASTM A351 CF8M / DIN 1.4408
	ASTM A216 WCB / DIN 1.0619
Ball Seal Material	PTFE, TFM1600/4215

Pressure/Temperature Chart



Size	DN	G.P.M
1/2"	15	28
3/4"	20	50
1"	25	95
1 1/4"	32	132
1 1/2"	40	260
2"	50	485
2 1/2"	65	800
3"	80	1250
4"	100	2250

Temperature in °C



## Valve Materials

No	Part Name	Material
1	Body	CF8M / WCB
2	Stem	SUS304
3	Thrust washer	RPTFE
4	O-Ring	TFM1600
5	Stem Packing	PTFE
6	Gland	SS 304
7	Disc Washer	SS 301
8	Stem Nut	SS304
9	Nut Stop	SS304
10	Washer	SS304
11	Flanged end	CF8M / WCB
12	Bolt	SS304
13	Gasket	PTFE
14	Ball	SS316
15	Ball Seat	PTFE/RPTFE
16	Stopper Plate	SUS304
17	Handle Nut	SS304
18	Handle	SS304
19	Sleeve	Plastic
20	Stop Pin	SUS304
21	Set Bolt	SUS304
22	Lever Head	CF8M / WCB
23	Pipe Handle	Steel Pipe

All information is sourced from our manufacturer's data and is intended for guidance only - Valves Online can accept no liability for changes, omissions or errors.

## Technical - Actuator

Body material	Hard anodised extruded aluminium alloy
End Caps	Die cast aluminium epoxy coated
Spring	High tensile steel
Indicator	Open/Closed
Pinion shaft	Alloy steel nickle plated
Pinion Guides	Self Lubricating Polypropylene + GF
Piston seals	NBR steel
Specification	
Pressure range	10 Bar, pilot pressure 5.5 - 8 Bar
Double acting	2.5 Bar - 8 Bar
Single acting - Open or Close	2.5 Bar - 8 Bar
Temperture range	minus 20°C - 80°C
Movement	90 Degree adjustable -5-+5 Degree
Lubrication	All moving parts are lubricated
Cycle Life	1,000,000 operations
Approvals	ATEX, CE, PED

### Double Acting

Requires 5.5 bar pilot air to open and close.  
A 4/2 - 5/2 pilot solenoid valve is needed to operate the valve

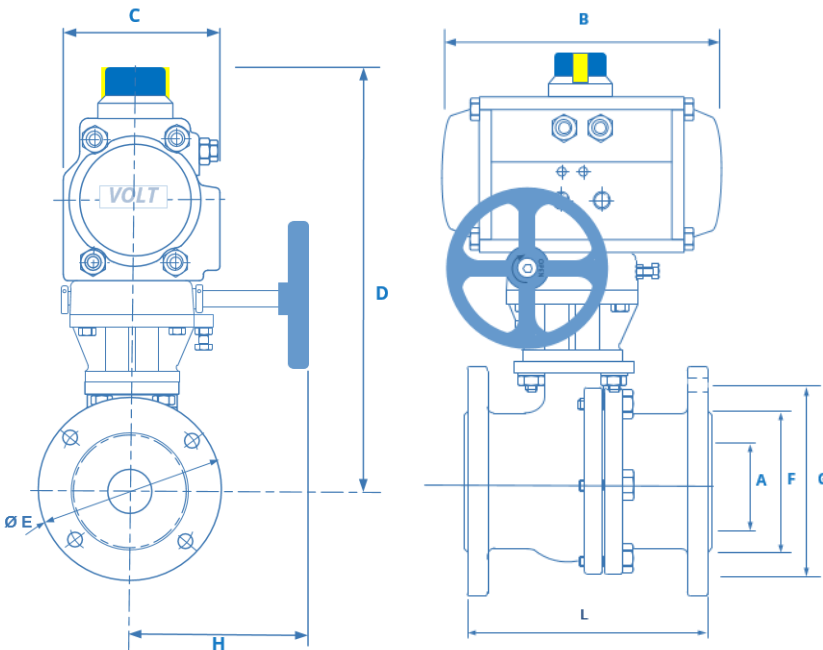
### Spring Return

Requires 5.5 bar pilot air to open the actuator.  
A 3/2 pilot solenoid valve is needed to operate the valve

## Valve and Actuator Sizing

THE VALVE AND ACTUATOR COMBINATION HAS BEEN SIZED WITH A MAXIMUM OF 10 BAR (150 PSI) (CLEAN WATER), MEDIUM LINE PRESSURE AND BASED ON A MINIMUM OF 5.5 BAR (80 PSI) PILOT AIR PRESSURE. SEE GRAPH. FOR HIGHER PRESSURES PLEASE CONTACT SALES WHO WILL ACCOMMODATE YOUR REQUIREMENTS, QUICKLY AND EASILY.

### With De-Clutch Gearbox



### Optional extras

We can offer this unit with additions of De-Clutchable gearboxes, Pilot Solenoids, Switchboxes or Combined switchbox and Solenoid. In addition V Segmented Control Balls can be fitted for Proportional Control.



All information is sourced from our manufacturer's data and is intended for guidance only - Valves Online can accept no liability for changes, omissions or errors.