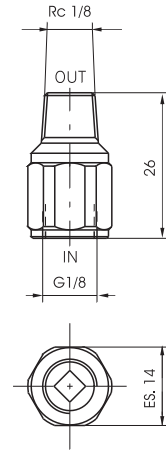
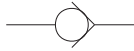


G 1/8" compact check valves

Ordering code
6.07.18.ⓐ
SEALS
ⓐ R = NBR
VR = FPM



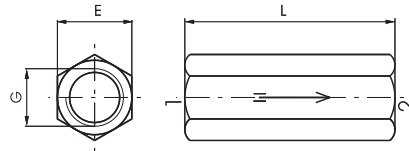
Weight gr. 50



Operational characteristic	Fluid	Max working pressure	Operating Temperature		Flow rate 6 bar at Δp=1
	Filtered air	Min. 2.5 bar Max.	Min. -5°C	Max. +70°C	100 NI/min

Check valves M5 - G/18" - G1/4" - G3/8" - G1/2"

Ordering code
6.07.ⓧ
POPPET
05 = NBR - M5
18 = NBR - G 1/8"
14 = NBR - G 1/4"
38 = NBR - G 3/8"
12 = NBR - G 1/2"
18V = FPM - G 1/8"
14V = FPM - G 1/4"
38V = FPM - G 3/8"
12V = FPM - G 1/2"



G	M5	1/8"	1/4"	3/8"	1/2"
E	10	14	17	21	25
L	21	37	48	50	60
Weight gr.	14	35	60	85	136

Flow rate at 6 bar with Δp = 1 NI/min. 160 650 1150 2600 3500

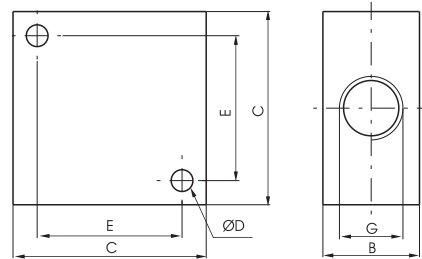
Weight "see table"



Operational characteristic	Fluid	Max working pressure	Operating Temperature	
	Filtered and lubricated air	10 bar	Min. -5°C	Max. +70°C (+150°C)

Manifold 4 ports M5 - G1/8" - G1/4" - G3/8" - G1/2"

Ordering code
6.08.ⓐ/4
CONNECTION
ⓐ 05 = M5
18 = G 1/8"
14 = G 1/4"
38 = G 3/8"
12 = G 1/2"



G	M5	1/8"	1/4"	3/8"	1/2"
B	10	16	20	20	30
C	20	32	40	40	50
D	3,3	4,5	4,5	5,5	6,5
E	14	22	30	30	38
Weight gr.	28	38	68	54	135

Weight "see table"

Operational characteristic	Fluid	Max working pressure	Operating Temperature	
	Filtered air	20 bar	Min. -5°C	Max. +70°C