

1

Push button-Spring

3/2

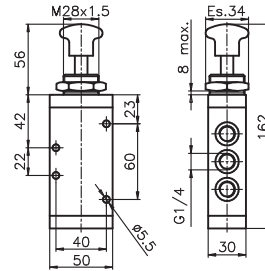
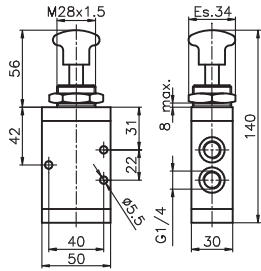
Ordering code

224.1.8.1

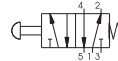
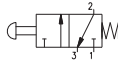
TYPE
1 32 = 3 ways
 52 = 5 ways

5/2

Push button-Spring



Weight gr. 395
Operating force 71,5N



Weight gr. 480
Operating force 71,5N

Operational characteristics	Fluid	Max working pressure	Operating Temperature		Flow rate at 6 bar with Δp=1	Orifice size	Working port size
	Filtered air, with or without lubrication	10 bar	Min. -5°C	Max. +70°C	1360 NI/min	mm 8	G 1/4"

Push button 2 positions

3/2

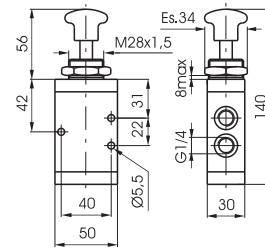
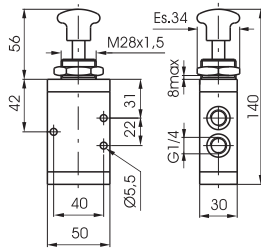
Ordering code

224.1.8

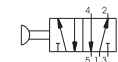
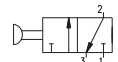
TYPE
1 32 = 3 ways
 52 = 5 ways

5/2

Push button 2 positions



Weight gr. 385
Operating force 105N



Weight gr. 470
Operating force 10N

Operational characteristics	Fluid	Max working pressure	Operating Temperature		Flow rate at 6 bar with Δp=1	Orifice size	Working port size
	Filtered air, with or without lubrication	10 bar	Min. -5°C	Max. +70°C	1360 NI/min	mm 8	G 1/4"

Lever lateral-Spring

3/2

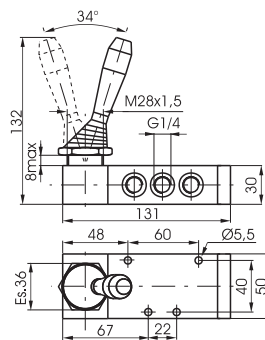
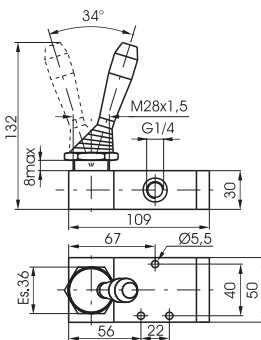
Ordering code

224.1.9.1/C

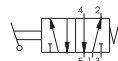
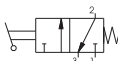
TYPE
1 32 = 3 ways
 52 = 5 ways
 BUTTON COLOR
C 1 = Red
 2 = Black
 3 = Green

5/2

Lever lateral-Spring



Weight gr. 520



Weight gr. 605

Operational characteristics	Fluid	Max working pressure	Operating Temperature		Flow rate at 6 bar with Δp=1	Orifice size	Working port size
	Filtered air, with or without lubrication	10 bar	Min. -5°C	Max. +70°C	1360 NI/min	mm 8	G 1/4"