

PN16/8 Blind Flange in 316L Stainless Steel

- Sizes ½" to 12" (DN15 – DN300)
- BS EN 10204.3.1B Certificates Available
- Bolts and Gaskets Supplied to Suit
- 316L Stainless Steel
- Raised Face Type 05

> Description

A PN16 type 05 raised face blind or blank flange in 316L stainless steel, conforming to EN1092-1 standard, (was BS4504). Available with full material traceability and 3.1B certification upon request. Sizes ½" to 1½" are the same dimensions on PN10/16/25/40. Sizes 2" to 6" same dimensions on PN10/16. Bolt kit sizes shown in the table are for bolting two flanges together including the thickness of a gasket. If using a wafer pattern valve, longer bolts will be required.

> Benefits

Sizes ½" to 12"
316L Stainless steel
Raised Face Type 05

Description

A 316L Stainless Steel PN16 type 05 Blank/Blind flange, conforming to EN1092-1. Sizes from ½" (DN15) to 12" (DN300). Full traceability and 3.1B certificates can be provided.

Beschreibung

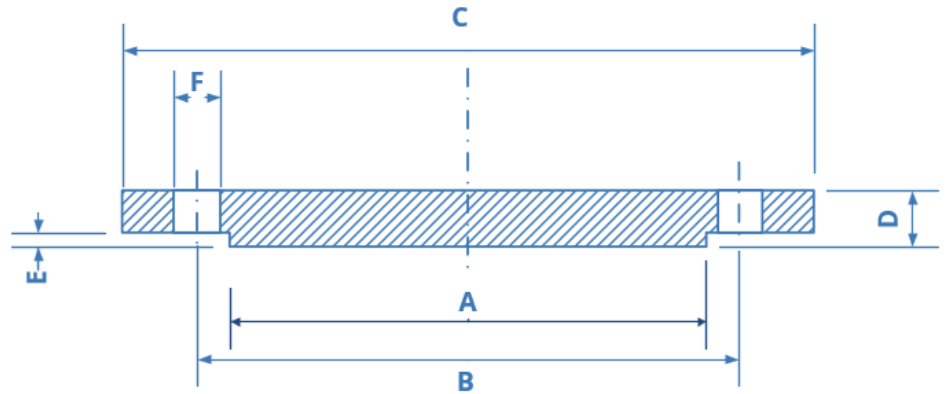
A 316L Edelstahl PN16 Typ 05 Blind- / Blindflansch gemäß EN1092-1. Größen von ½ "(DN15) bis 12" (DN300). Volle Rückverfolgbarkeit und 3.1B-Zertifikate können bereitgestellt werden.

Descripción

Una brida ciega / ciega de acero inoxidable 316L PN16 tipo 05, conforme a EN1092-1. Tamaños desde ½ "(DN15) hasta 12" (DN300). Se puede proporcionar trazabilidad completa y certificados 3.1B.

Description

A Acier inoxydable 316L PN16 type 05 Bride vierge / aveugle, conforme à EN1092-1. Tailles de ½ "(DN15) à 12" (DN300). Une traçabilité complète et des certificats 3.1B peuvent être fournis.



PN16/05 Blind/Blank Flange in 316L

Pipe Size	DN	Code 316	Code 304	A	B	C	D	E	F	Bolt	KG	Bolt Kit
1/2"	15	F16820.5	F1680.5 304	45	65	21.3	16	2	14	4 x M12	0.72	BK03
3/4"	20	F1680.75	F1680.75 304	58	75	26.9	18	2	14	4 x M12	1.01	BK03
1"	25	F1681.0	F1681.0 304	68	85	33.7	18	2	14	4 x M12	1.23	BK03
1 1/4"	32	F1680.25	F1680.25 304	78	100	42.4	18	2	18	4 x M16	1.8	BK04
1 1/2"	40	F1681.5	F1681.5 304	88	110	48.3	18	3	18	4 x M16	2.09	BK04
2"	50	F1682.0	F1682.0 304	102	125	60.3	18	3	18	4 x M16	2.88	BK04
2 1/2"	65	F1682.5	F1682.5 304	122	145	76.1	18	3	18	4 x M16	3.66	BK04
2 1/2"	65	F1682.5 8 Hole	F1682.5 304 8 Hole	122	145	76.1	18	3	18	4x M16	3.66	BK05
3"	80	F1683.0	F1683.0 304	138	160	88.9	20	3	18	8x M16	4.77	BK07
4"	100	F1684.0	F1684.0 304	158	180	114.3	20	3	18	8x M16	5.65	BK07
5"	125	F1685.0	F1685.0 304	188	210	139.7	22	3	18	8x M16	8.42	BK07
6"	150	F1686.0	F1686.0 304	212	240	168.3	22	3	22	8 x M20	10.4	BK10
8"	200	F1688.0	F1688.0 304	268	295	219.1	24	3	22	12 x M20	16.2	BK11
10"	250	F16810.0	F16810.0 304	320	355	405	24	3	26	12 x M24	26.6	BK15
12"	300	F16812.0	F16812.0 304	378	410	460	32	4	26	12 x M24	44.2	BK15



➤ **Other Flanges in Stock**

➤ **Gaskets and Bolt Sets**

