





SKU: C/S SG5393
St/ St SG5364

-  VOLT P Type Sight Flow Indicator
-  VOLT P Sight Durchflussanzeige
-  VOLT P Tipo indicador de flujo de visión
-  VOLT P Indicateur de type Sight Flow

Valves[™]
O N L I N E

- 1/4" - 6" P Type Sight Flow Indicator
- 1/4" - 6" P Typ Sight Durchflussanzeige
- 1/4" - 6" P Tipo indicador de flujo de visión
- 1/4" - 6" P Indicateur de type Sight Flow

**P Type Sight Flow
Indicator in Carbon
and Stainless Steel**

**SCREWED 1/4" - 2"
FLANGED 1/2" - 6"**



- Screwed and flanged connections
- CE marked and fully PED compliant
- High temperature and pressure ratings
- Short lead times
- Designed and manufactured in the UK

This design of flow indicator is usually used for checking the presence of liquid in a pipeline where the flow is intermittent or partially filled pipes with air entrapped. It can be used in vertical or horizontal lines and is ideal for flow monitoring in full pipes and leak detection. Bodies are in either stainless steel or carbon steel, screwed or flanged. (Gunmetal Options)



MADE IN BRITAIN



Description

This sight flow indicator is used to check the presence of flow of a liquid in an pipeline. The indicator sight glass has a plain spout cast in the body which is ideal for visually detecting leakage or intermittent flow. It can be used in vertical or horizontal lines and is ideal as a plant safety device.



Beschreibung

Diese Sight Flow Indikator wird verwendet, um das Vorhandensein von Fluss einer Flüssigkeit in einer Pipeline zu überprüfen. Das Anzeige-Schauglas hat einen einfachen Ausguss, der im Körper gegossen wird, der für das Sichtentdecken von Leckage oder intermittierendem Fluss ideal ist. Es kann in vertikalen oder horizontalen Linien verwendet werden und ist ideal als Anlagensicherung.



Descripción

Este indicador de flujo visual se utiliza para verificar la presencia de flujo de un líquido en una tubería. El visor del indicador tiene un chorro simple fundido en el cuerpo que es ideal para detectar visualmente fugas o flujo intermitente. Se puede utilizar en líneas verticales o horizontales y es ideal como dispositivo de seguridad de la planta.

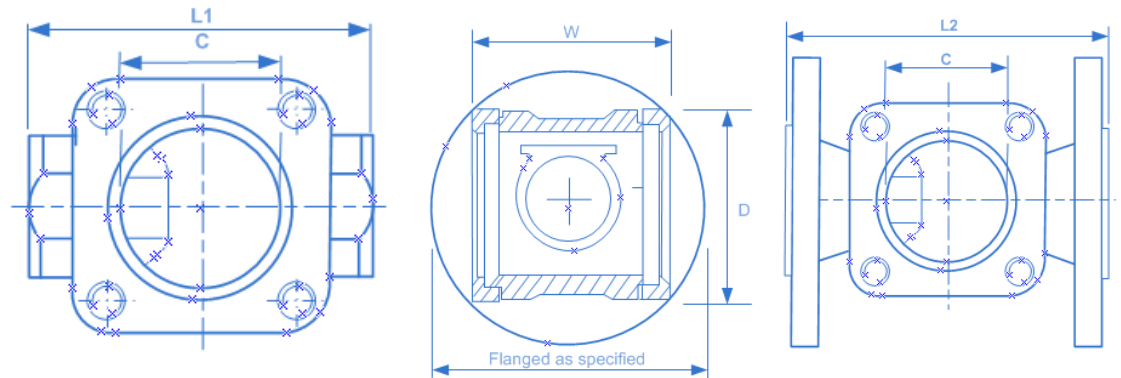


Description

Cet indicateur de débit visuel est utilisé pour vérifier la présence d'écoulement d'un liquide dans une canalisation. Le voyant indicateur a un bec verseur coulé dans le corps qui est idéal pour la détection visuelle de fuite ou d'écoulement intermittent. Il peut être utilisé dans des lignes verticales ou horizontales et est idéal comme un dispositif de sécurité de l'usine.

-  VOLT P Type Sight Flow Indicator
-  VOLT P Sicht Durchflussanzeige
-  VOLT Indicador de flujo de vista tipo P
-  VOLT Indicateur de débit de type P

Sight Flow Indicator



Construction

The standard bodies are cast in either; carbon steel, 316 stainless steel or LG2 gun metal, though we can produce them in other materials.

The glass windows are held in place by stainless steel covers and screws, and sealed with PTFE gaskets, giving superior protection. For ease of maintenance the glasses can be individually removed and replaced.

For standard applications the indicator is fitted with toughened soda lime glass discs to BS3463 and rated to 16 bar.

For steam and condensate we recommend toughened borosilicate glass, while for alkaline liquids mica discs can be used to protect the glass.

The sight glasses can be supplied with screwed connections to NPT, BSP parallel or taper. The standard flanges available are ANSI 150, ANSI 300 and PN16, though special flanges can be supplied.

Dimensions

Nominal Bore	Length L1	Length L2	Width W	Depth D	Clearview C
8/10 SCREWED	85	NA	63	60	42
15/20MM	85	130	63	60	42
25MM	95	140	72	66	48
40MM	120	180	102	84	62
50MM	150	220	118	106	77
80MM	NA	260	160	170	100
100MM	NA	260	196	170	100
150MM	NA	360	304	220	150
200MM	NA	460	370	280	200

Options

Body





We offer stock carbon and stainless steel, but can supply sight glasses in special materials such as super duplex, hastelloy or low carbon steels.

Glass

High pressure toughened soda lime to BS3463 rated to 40 bar or 60 bar depending on the size, toughened borosilicate to BS3463 or DIN7080 rated up to 16 bar. Higher pressures are achievable by reducing the viewing diameter. The high pressure range uses powder coated mild steel covers as standard. Stainless steel covers are available as an option.

Gaskets

Graphite gaskets are available if required.

-  VOLT P Type Sight Flow Indicator
-  VOLT P Sight Durchflussanzeige
-  VOLT Indicador de flujo de vista tipo P
-  VOLT Indicateur de débit de type P

Sight Flow Indicator

Code			Description	
SP			Stainless Steel Body BS 1504 316 C16	
CP			Carbon Steel Body BS 1504 161 GR480	
GP			Gunmetal Body BS 1400 LG2	
			Glass Material and Pressure Range	
			Toughened Soda Lime Glass to BS3463 rated to 16 bar (standard)	
H			Toughened Soda Lime Glass to BS3463 rated to 40 bar	
B			Toughened Borosilicate Glass to BS3463	
HB			Toughened Borosilicate Glass to DIN 7080	
			flow ranges -Ltr/M	
		indicator Size		
	8	1/4"	Screwed Only	
	10	3/8"	Screwed Only	
	15	1/2"		
	20	3/4"		
	25	1"		
	40	1 1/2"		
	50	2"		
	80	3"		
	100	4"		
	150	6"		
	200	8"		
		End Connection		
		A	ANSI 150	
		C	ANSI300	
		N	PN16	
		1	BSP	
		2	BSPT	
		3	NPT	
		4	Socket weld	

Materials of Construction	
Cover	Stainless steel ASTM A351 CF8M (316) Powder coated mild steel grade S355j2+N
Flap	Stainless steel 316
Internal Gasket	PTFE - St St & C.S, gunmetal C4400
External Gasket	Klingersil C4400
Fastners	Stainless Steel
Edge Protector	Klingersil C4400



MADE IN BRITAN

Quality

This indicator is manufactured in the United Kingdom to the highest standards. The quality system is independently audited by BSI and certified to ISO 9001. The indicators are fully PED compliant and CE marked where required. TUV are our external auditors for the Pressure Equipment Directive. Full material traceability is maintained, material certificates and pressure test certificates are supplied on request