

STAINLESS STEEL NORMALLY OPEN

0.5-15 BAR SERVO ASSISTED SOLENOID VALVE

Key features:

- Servo-assisted solenoid valve
- Normally open, 2-way operation
- 316 stainless steel body (CF8M)
- Seal options include: NBR, FKM, EPDM, and HNBR
- Screwed BSP connections
- Sizes available: 3/8" to 2"
- Pressure range: 0.5 to 15 bar
- Pressure rating, ΔP : 0.5 to 10 bar
- Operating voltages: 12V DC, 24V DC, 24V AC, 110V AC, 230V AC
- Supplied with a cable plug



DETAILS

A servo-assisted solenoid valve offering normally open, 2-way operation.

The valve features a stainless steel body with a choice of NBR, FKM, EPDM or HNBR seals and is available in sizes from 3/8" to 2".

The valve should be mounted with the coil upright.

Designed for use with neutral gases and slightly corrosive and mildly aggressive fluids.

Suitable applications include chemical process, pumping systems, processing systems, water/sewage treatment and sterilizers.

Offers high flow rates and low noise; and requires a minimum differential pressure of 0.5 bar to operate fully.

The valve has a working pressure range of 0.5 to 15 bar, a pressure rating, ΔP (differential pressure) of 0.5 to 10 bar and an ambient temperature range of -20°C to +60°C.

Media temperature ranges are dependant on seal materials as follows: -15°C to +80°C (NBR), -10°C to +180°C (FKM), -5°C to +130°C (EPDM) and -40°C to +150°C (HNBR).

Suitable operating voltages are 12V DC, 24V DC, 24V AC, 110V AC, and 230V AC, and supplied fitted with a cable plug.

STAINLESS STEEL NORMALLY OPEN

0.5-15 BAR SERVO ASSISTED SOLENOID VALVE

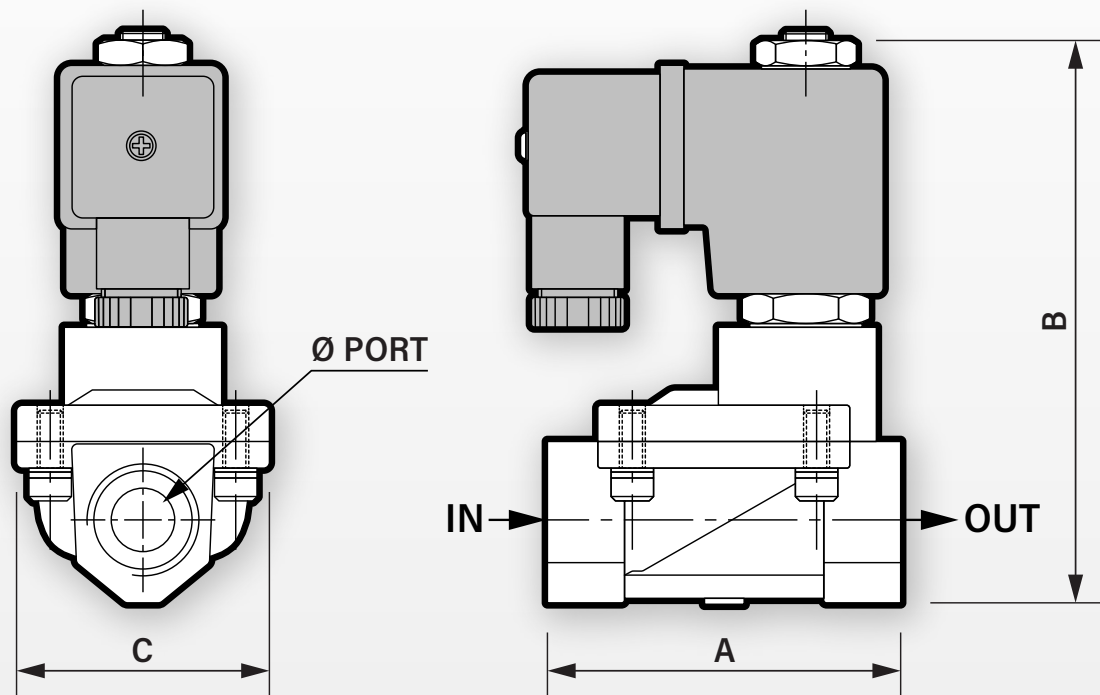


TABLE 1: DIMENSIONS IN MM

Size	A	B	C	Ø Port, BSP	Ø Orifice	Weight
3/8"	66.5	106.5	48	3/8"	13	0.740 kg
1/2"	66.5	106.5	48	1/2"	13	0.740 kg
3/4"	96.0	126.0	75	3/4"	25	1.565 kg
1"	96.0	126.0	75	1"	25	1.565 kg
1 1/4"	131.5	145.5	101	1 1/4"	38	2.560 kg
1 1/2"	131.5	145.5	101	1 1/2"	38	2.560 kg
2"	160.0	160.0	118	2"	50	3.440 kg

STAINLESS STEEL NORMALLY OPEN

0.5-15 BAR SERVO ASSISTED SOLENOID VALVE

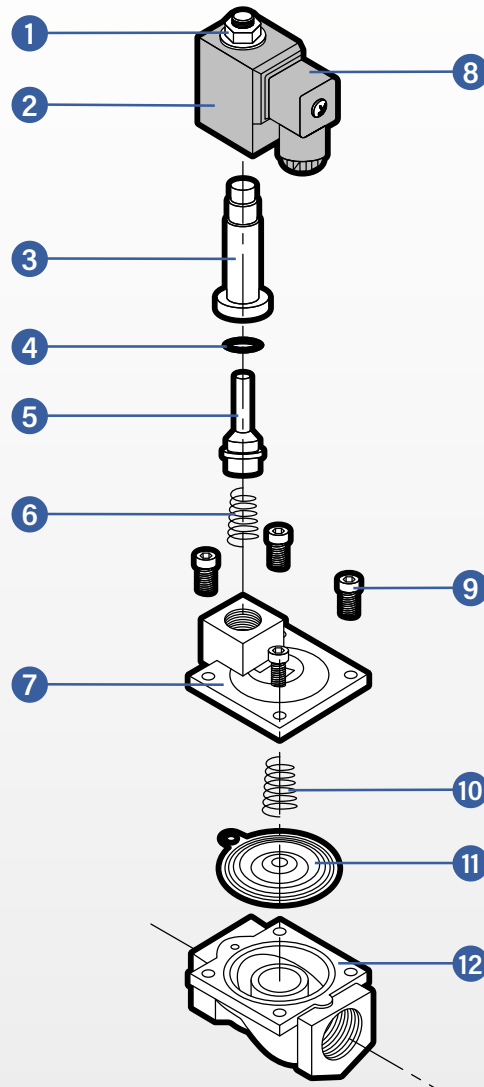


TABLE 2: PARTS

Item	Part
1	Coil nut
2	Coil
3	Armature
4	O-ring
5	Plunger
6	Plunger spring
7	Top cover
8	Connector
9	Screw (x4)
10	Spring
11	Diaphragm
12	Body

STAINLESS STEEL NORMALLY OPEN

0.5-15 BAR SERVO ASSISTED SOLENOID VALVE

TABLE 3: FLOW (KV) IN L/MIN

Size	Flow (Kv)
3/8"	40 l/min
1/2"	40 l/min
3/4"	165 l/min
1"	165 l/min
1 1/4"	367 l/min
1 1/2"	500 l/min
2"	600 l/min

TABLE 4: ELECTRICAL DATA

Voltage (-10% + 10%) Continuous Duty 100%	Coil	Power Consumption		Insulation Class	Enclosure	Electrical Connections
		Inrush	Holding			
24V AC (50/60 Hz) 110V AC (50/60 Hz) 230V AC (50/60 Hz)	22003	23VA	17VA	H 180°C	IP65 with connector	3 spades DN 43650 DIN 40050 VDE 0110
12V DC 24V DC	22003	15 Watts	15 Watts	H 180°C	IP65 with connector	3 spades DN 43650 DIN 40050 VDE 0110

TABLE 5: PART NUMBERS

SEAL MATERIAL: FKM

SIZE	12V DC	24V DC	24V AC	110V AC	230V AC
3/8"	SV5630-100101	SV5630-100108	SV5630-100115	SV5630-100122	SV5630-100129
1/2"	SV5630-100102	SV5630-100109	SV5630-100116	SV5630-100123	SV5630-100130
3/4"	SV5630-100103	SV5630-100110	SV5630-100117	SV5630-100124	SV5630-100131
1"	SV5630-100104	SV5630-100111	SV5630-100118	SV5630-100125	SV5630-100132
1 1/4"	SV5630-100105	SV5630-100112	SV5630-100119	SV5630-100126	SV5630-100133
1 1/2"	SV5630-100106	SV5630-100113	SV5630-100120	SV5630-100127	SV5630-100134
2"	SV5630-100107	SV5630-100114	SV5630-100121	SV5630-100128	SV5630-100135

STAINLESS STEEL NORMALLY OPEN

0.5-15 BAR SERVO ASSISTED SOLENOID VALVE

TABLE 6: PART NUMBERS

SEAL MATERIAL: NBR

SIZE	12V DC	24V DC	24V AC	110V AC	230V AC
3/8"	SV5630-100136	SV5630-100143	SV5630-100150	SV5630-100157	SV5630-100164
1/2"	SV5630-100137	SV5630-100144	SV5630-100151	SV5630-100158	SV5630-100165
3/4"	SV5630-100138	SV5630-100145	SV5630-100152	SV5630-100159	SV5630-100166
1"	SV5630-100139	SV5630-100146	SV5630-100153	SV5630-100160	SV5630-100167
1 1/4"	SV5630-100140	SV5630-100147	SV5630-100154	SV5630-100161	SV5630-100168
1 1/2"	SV5630-100141	SV5630-100148	SV5630-100155	SV5630-100162	SV5630-100169
2"	SV5630-100142	SV5630-100149	SV5630-100156	SV5630-100163	SV5630-100170

TABLE 7: PART NUMBERS

SEAL MATERIAL: EPDM

SIZE	12V DC	24V DC	24V AC	110V AC	230V AC
3/8"	SV5630-100171	SV5630-100178	SV5630-100185	SV5630-100192	SV5630-100199
1/2"	SV5630-100172	SV5630-100179	SV5630-100186	SV5630-100193	SV5630-100200
3/4"	SV5630-100173	SV5630-100180	SV5630-100187	SV5630-100194	SV5630-100201
1"	SV5630-100174	SV5630-100181	SV5630-100188	SV5630-100195	SV5630-100202
1 1/4"	SV5630-100175	SV5630-100182	SV5630-100189	SV5630-100196	SV5630-100203
1 1/2"	SV5630-100176	SV5630-100183	SV5630-100190	SV5630-100197	SV5630-100204
2"	SV5630-100177	SV5630-100184	SV5630-100191	SV5630-100198	SV5630-100205

TABLE 8: PART NUMBERS

SEAL MATERIAL: HNBR

SIZE	12V DC	24V DC	24V AC	110V AC	230V AC
3/8"	SV5630-100206	SV5630-100213	SV5630-100220	SV5630-100227	SV5630-100234
1/2"	SV5630-100207	SV5630-100214	SV5630-100221	SV5630-100228	SV5630-100235
3/4"	SV5630-100208	SV5630-100215	SV5630-100222	SV5630-100229	SV5630-100236
1"	SV5630-100209	SV5630-100216	SV5630-100223	SV5630-100230	SV5630-100237
1 1/4"	SV5630-100210	SV5630-100217	SV5630-100224	SV5630-100231	SV5630-100238
1 1/2"	SV5630-100211	SV5630-100218	SV5630-100225	SV5630-100232	SV5630-100239
2"	SV5630-100212	SV5630-100219	SV5630-100226	SV5630-100233	SV5630-100240