

BRASS NORMALLY OPEN 0.5-15 BAR

SERVO ASSISTED SOLENOID VALVE

Key features:

- Servo-assisted solenoid valve
- Normally open, 2-way operation
- Brass body
- Seal options include: NBR, FKM, EPDM, and HNBR
- Screwed BSP connections
- Sizes available: 3/8" to 2"
- Pressure range: 0.5 to 15 bar
- Pressure rating, ΔP : 0.5 to 10 bar
- Operating voltages: 12V DC, 24V DC, 24V AC, 110V AC, 230V AC
- Supplied with a cable plug



DETAILS

A servo-assisted solenoid valve offering normally open, 2-way operation.

The valve features a brass body with a choice of NBR, FKM, EPDM or HNBR seals and is available in sizes from 3/8" to 2"

The valve should be mounted with the coil upright.

Designed for use with neutral gases and slightly corrosive and mildly aggressive fluids.

Suitable applications include chemical process, pumping systems, processing systems, water/sewage treatment and sterilizers.

Offers high flow rates and low noise; and requires a minimum differential pressure of 0.5 bar to operate fully.

The valve has a working pressure range of 0.5 to 15 bar, a pressure rating, ΔP (differential pressure) of 0.5 to 10 bar and an ambient temperature range of -20°C to +60°C.

Media temperature ranges are dependant on seal materials as follows: -15°C to +80°C (NBR), -10°C to +180°C (FKM), -5°C to +130°C (EPDM) and -40°C to +150°C (HNBR).

Suitable operating voltages are 12V DC, 24V DC, 24V AC, 110V AC, and 230V AC, and supplied fitted with a cable plug.

BRASS NORMALLY OPEN 0.5-15 BAR

SERVO ASSISTED SOLENOID VALVE

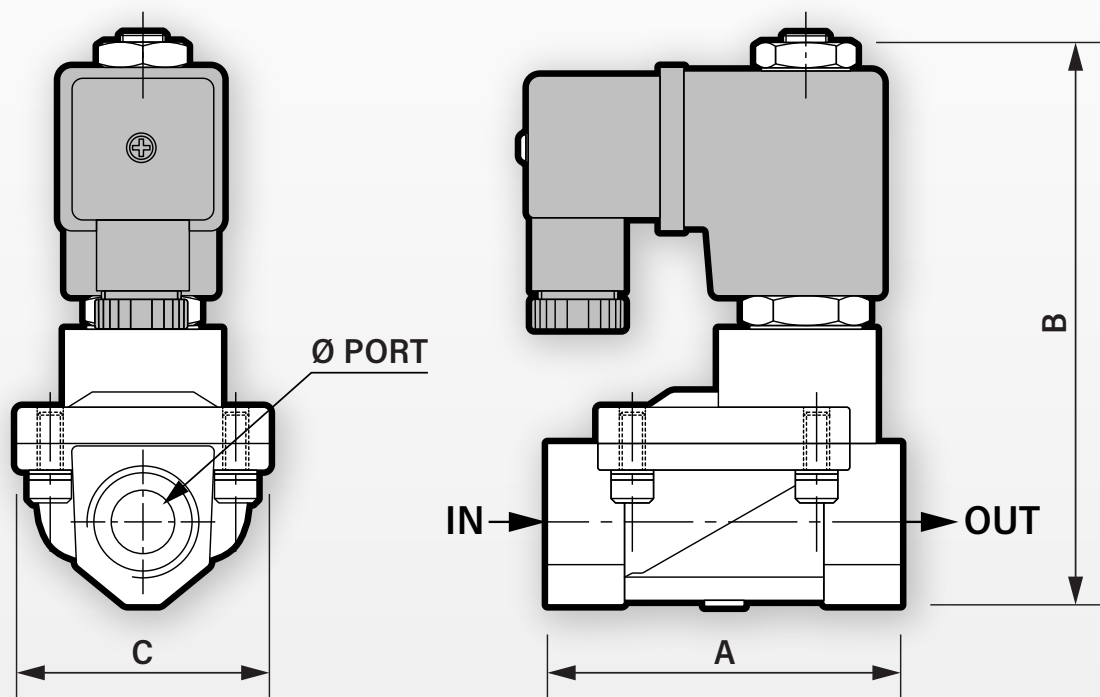


TABLE 1: DIMENSIONS IN MM

Size	A	B	C	Ø Port, BSP	Ø Orifice	Weight
3/8"	66.5	106.5	48	3/8"	13	0.725 kg
1/2"	66.5	106.5	48	1/2"	13	0.725 kg
3/4"	96.0	126.5	70	3/4"	25	1.565 kg
1"	96.0	126.5	70	1"	25	1.565 kg
1 1/4"	131.0	145.5	96	1 1/4"	38	2.560 kg
1 1/2"	131.0	145.5	96	1 1/2"	38	2.560 kg
2"	160.0	160.5	112	2"	50	3.900 kg

BRASS NORMALLY OPEN 0.5-15 BAR

SERVO ASSISTED SOLENOID VALVE

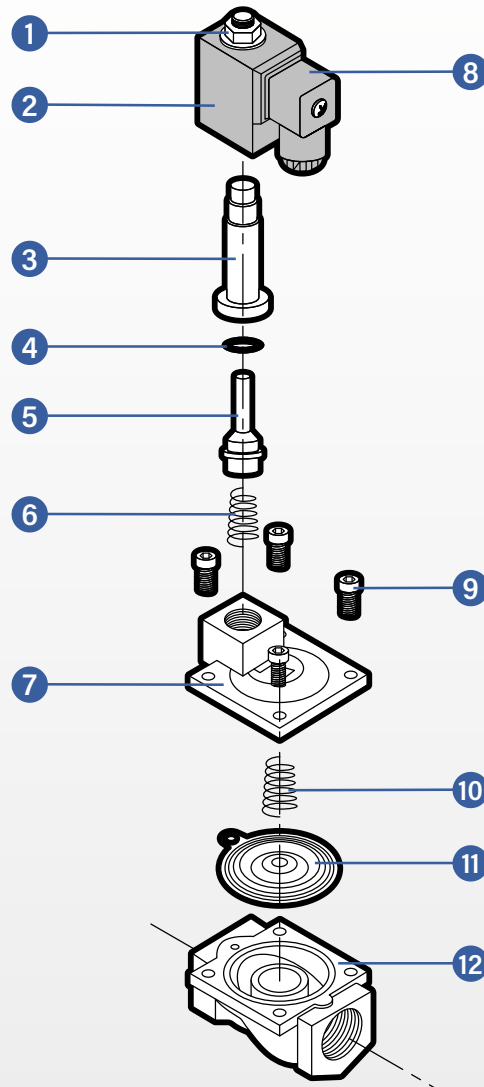


TABLE 2: PARTS

Item	Part
1	Coil nut
2	Coil
3	Armature
4	O-ring
5	Plunger
6	Plunger spring
7	Top cover
8	Connector
9	Screw (x4)
10	Spring
11	Diaphragm
12	Body

BRASS NORMALLY OPEN 0.5-15 BAR

SERVO ASSISTED SOLENOID VALVE

TABLE 3: FLOW (KV) IN L/MIN

Size	Flow (Kv)
3/8"	40 l/min
1/2"	40 l/min
3/4"	165 l/min
1"	165 l/min
1 1/4"	367 l/min
1 1/2"	500 l/min
2"	600 l/min

TABLE 4: ELECTRICAL DATA

Voltage (-10% + 10%) Continuous Duty 100%	Coil	Power Consumption		Insulation Class	Enclosure	Electrical Connections
		Inrush	Holding			
24V AC (50/60 Hz) 110V AC (50/60 Hz) 230V AC (50/60 Hz)	22003	23VA	17VA	H 180°C	IP65 with connector	3 spades DN 43650 DIN 40050 VDE 0110
12V DC 24V DC	22003	15 Watts	15 Watts	H 180°C	IP65 with connector	3 spades DN 43650 DIN 40050 VDE 0110

TABLE 5: PART NUMBERS

SEAL MATERIAL: NBR

Size	12V DC	24V DC	24V AC	110V AC	230V AC
3/8"	SV5631-100245	SV5631-100252	SV5631-100259	SV5631-100266	SV5631-100273
1/2"	SV5631-100246	SV5631-100253	SV5631-100260	SV5631-100267	SV5631-100274
3/4"	SV5631-100247	SV5631-100254	SV5631-100261	SV5631-100268	SV5631-100275
1"	SV5631-100248	SV5631-100255	SV5631-100262	SV5631-100269	SV5631-100276
1 1/4"	SV5631-100249	SV5631-100256	SV5631-100263	SV5631-100270	SV5631-100277
1 1/2"	SV5631-100250	SV5631-100257	SV5631-100264	SV5631-100271	SV5631-100278
2"	SV5631-100251	SV5631-100258	SV5631-100265	SV5631-100272	SV5631-100279

BRASS NORMALLY OPEN 0.5-15 BAR

SERVO ASSISTED SOLENOID VALVE

TABLE 6: PART NUMBERS

SEAL MATERIAL: FKM

Size	12V DC	24V DC	24V AC	110V AC	230V AC
3/8"	SV5631-100280	SV5631-100287	SV5631-100294	SV5631-100301	SV5631-100308
1/2"	SV5631-100281	SV5631-100288	SV5631-100295	SV5631-100302	SV5631-100309
3/4"	SV5631-100282	SV5631-100289	SV5631-100296	SV5631-100303	SV5631-100310
1"	SV5631-100283	SV5631-100290	SV5631-100297	SV5631-100304	SV5631-100311
1 1/4"	SV5631-100284	SV5631-100291	SV5631-100298	SV5631-100305	SV5631-100312
1 1/2"	SV5631-100285	SV5631-100292	SV5631-100299	SV5631-100306	SV5631-100313
2"	SV5631-100286	SV5631-100293	SV5631-100300	SV5631-100307	SV5631-100314

TABLE 7: PART NUMBERS

SEAL MATERIAL: EPDM

Size	12V DC	24V DC	24V AC	110V AC	230V AC
3/8"	SV5631-100315	SV5631-100322	SV5631-100329	SV5631-100336	SV5631-100343
1/2"	SV5631-100316	SV5631-100323	SV5631-100330	SV5631-100337	SV5631-100344
3/4"	SV5631-100317	SV5631-100324	SV5631-100331	SV5631-100338	SV5631-100345
1"	SV5631-100318	SV5631-100325	SV5631-100332	SV5631-100339	SV5631-100346
1 1/4"	SV5631-100319	SV5631-100326	SV5631-100333	SV5631-100340	SV5631-100347
1 1/2"	SV5631-100320	SV5631-100327	SV5631-100334	SV5631-100341	SV5631-100348
2"	SV5631-100321	SV5631-100328	SV5631-100335	SV5631-100342	SV5631-100349

TABLE 8: PART NUMBERS

SEAL MATERIAL: HNBR

Size	12V DC	24V DC	24V AC	110V AC	230V AC
3/8"	SV5631-100350	SV5631-100357	SV5631-100364	SV5631-100371	SV5631-100378
1/2"	SV5631-100351	SV5631-100358	SV5631-100365	SV5631-100372	SV5631-100379
3/4"	SV5631-100352	SV5631-100359	SV5631-100366	SV5631-100373	SV5631-100380
1"	SV5631-100353	SV5631-100360	SV5631-100367	SV5631-100374	SV5631-100381
1 1/4"	SV5631-100354	SV5631-100361	SV5631-100368	SV5631-100375	SV5631-100382
1 1/2"	SV5631-100355	SV5631-100362	SV5631-100369	SV5631-100376	SV5631-100383
2"	SV5631-100356	SV5631-100363	SV5631-100370	SV5631-100377	SV5631-100384