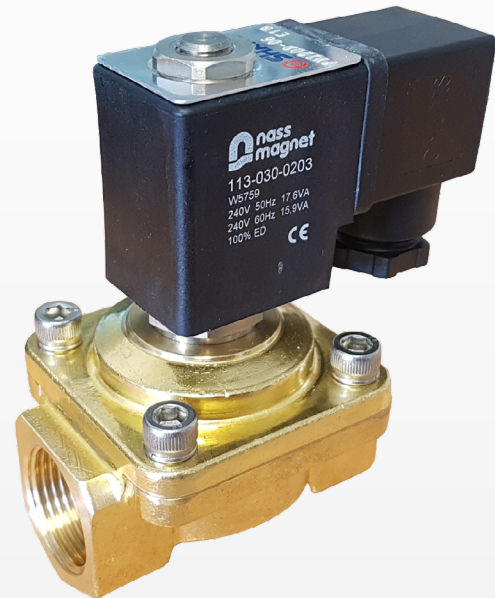


SV5635 ECONOMY WRAS APPROVED

NORMALLY CLOSED BRASS SOLENOID VALVE

- **Key features:**
- **Normally closed, 2-way operation**
- **Brass body**
- **EPDM seals and gaskets**
- **Screwed BSP connections**
- **Sizes available: 3/8" to 1"**
- **Max. working pressure: 10 bar**
- **Pressure rating, ΔP : 0 to 10 bar**
- **Operating voltages: 12V DC, 24V DC, 24V AC, 110V AC, and 230V AC**
- **Supplied with a cable plug**
- **WRAS approved**



DETAILS

A solenoid valve offering normally closed, 2-way operation.

The valve features a brass body, stainless steel tube and internal parts, and WRAS certified EPDM seals and gaskets.

Available in sizes 3/8", 1/2", 3/4", and 1" with BSP screwed end connections.

The valve should be mounted with the coil upright.

Designed for use with water and featuring a slow close reduced water hammer design.

The valve has a maximum working pressure 10 bar, a pressure rating, ΔP (differential pressure) of 0 to 10 bar.

Maximum media temperature of +90°C. Ambient temperature range of -20°C to +60°C.

Suitable operating voltages are 12V DC, 24V DC, 24V AC, 110V AC, and 230V AC, and supplied fitted with a cable plug.

WRAS certified and pressure tested to 10.5 bar, 90°C hot and cold water, 200,000 cycles. Approval no. 1704353.



SV5635 ECONOMY WRAS APPROVED

NORMALLY CLOSED BRASS SOLENOID VALVE

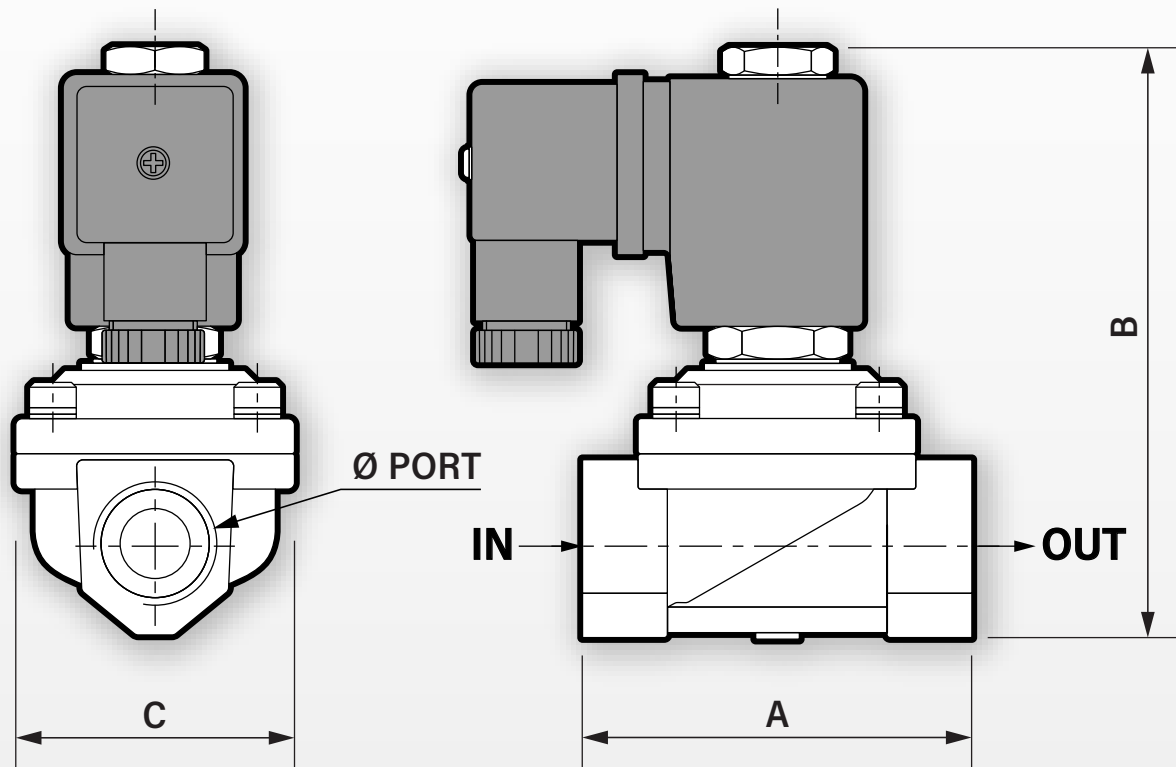


TABLE 1: DIMENSIONS IN MM

Size	A	B	C	Ø Port, BSP	Ø Orifice	Weight
3/8"	66.5	101.0	48.0	3/8"	13	0.740 kg
1/2"	66.5	101.0	48.0	1/2"	13	0.715 kg
3/4"	71.0	107.0	58.0	3/4"	20	0.945 kg
1"	96.0	120.5	70.0	1"	25	1.485 kg

SV5635 ECONOMY WRAS APPROVED

NORMALLY CLOSED BRASS SOLENOID VALVE

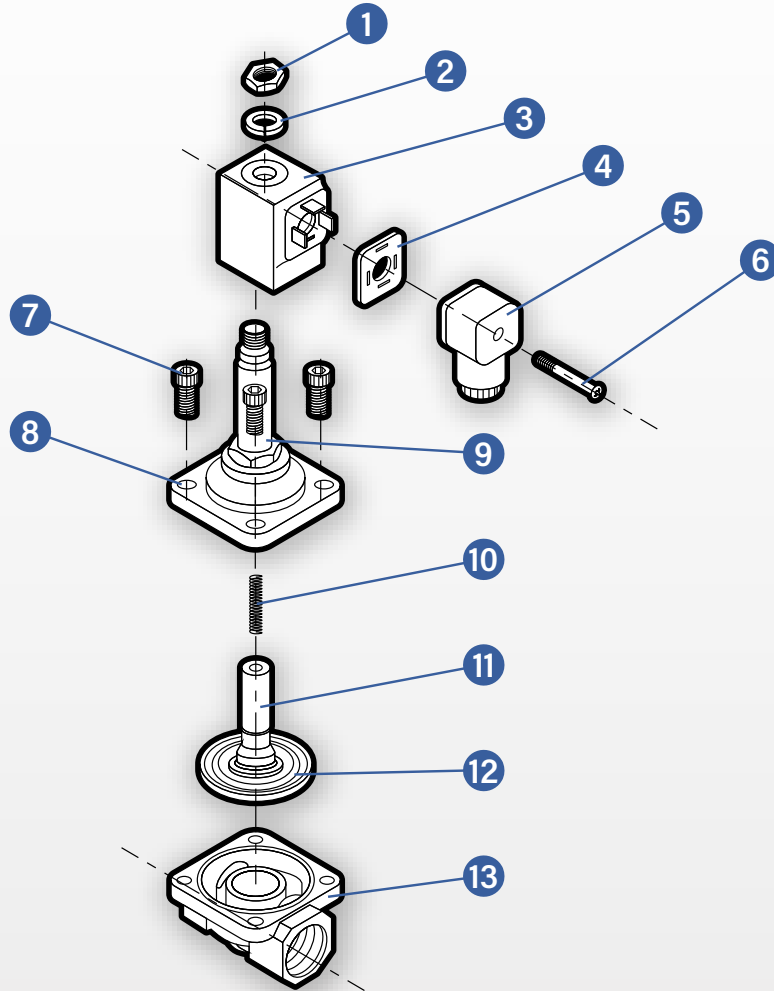


TABLE 2: PARTS

Item	Part
1	Nut
2	Washer
3	Coil
4	Gasket
5	Connector
6	Screw
7	Screws (x4)
8	Body cover
9	Armature
10	Spring
11	Plunger
12	Diaphragm
13	Body

SV5635 ECONOMY WRAS APPROVED

NORMALLY CLOSED BRASS SOLENOID VALVE

TABLE 3: FLOW (KV) IN L/MIN

Size	Flow (Kv)
3/8"	59.0
1/2"	59.0
3/4"	125.5
1"	170.5

TABLE 4: ELECTRICAL DATA

Voltage (-10% + 10%) Continuous Duty 100%	Coil	Power Consumption		Insulation Class	Enclosure	Electrical Connections
		Inrush	Holding			
24V AC (50/60 Hz) 110V AC (50/60 Hz) 230V AC (50/60 Hz)	22003	23VA	17VA	H 180°C	IP65 with connector	3 spades DN 43650A DIN 40050 VDE 0110
12V DC 24V DC	22005	18.5 Watts	18.5 Watts	H 180°C	IP65 with connector	3 spades DN 43650A DIN 40050 VDE 0110

TABLE 5: PART NUMBERS

SEAL MATERIAL: EPDM WRAS CERTIFIED

Size	12V DC	24V DC	24V AC	110V AC	240V AC
3/8"	SV5635-100730	SV5635-100734	SV5635-100738	SV5635-100742	SV5635-100746
1/2"	SV5635-100731	SV5635-100735	SV5635-100739	SV5635-100743	SV5635-100747
3/4"	SV5635-100732	SV5635-100736	SV5635-100740	SV5635-100744	SV5635-100748
1"	SV5635-100733	SV5635-100737	SV5635-100741	SV5635-100745	SV5635-100749