

3/2 BRASS 3-WAY DIRECT ACTING

SOLENOID VALVE

- **Key features:**
- **Universal, 3-way direct acting operation**
- **Brass body**
- **NBR or FKM seals and gaskets**
- **Screwed BSP connections**
- **Sizes available: 1/4" 1.6mm orifice, and 1/4" 2.2mm orifice**
- **Media temperature range: -10°C to +100°C**
- **Ambient temperature range: -20°C to +60°C**
- **Pressure range: 0 to 11 bar max. (depending on operating voltage)**
- **Operating voltages: 12V DC, 24V DC, 24V AC, 110V AC, and 230V AC**
- **Supplied with a cable plug**



DETAILS

A solenoid valve offering universal, 3-way direct acting operation.

The valve features a brass body, stainless steel tube and internal parts, and NBR or FKM seals and gaskets.

Available in two sizes: 1/4" with a 1.6 mm orifice, and 1/4" with 2.2 mm orifice, with BSP screwed end connections.

The valve can be mounted in any position.

Designed for use with air, water, gas and light oil.

Working pressure range of 0 to 11 bar maximum, this is dependent on the operating voltage used: please refer to Table 3 for details.

Maximum media temperature range of -10°C to +100°C. Ambient temperature range of -20°C to +60°C.

Suitable operating voltages are 12V DC, 24V DC, 24V AC, 110V AC, and 230V AC, and supplied fitted with a cable plug.

3/2 BRASS 3-WAY DIRECT ACTING

SOLENOID VALVE

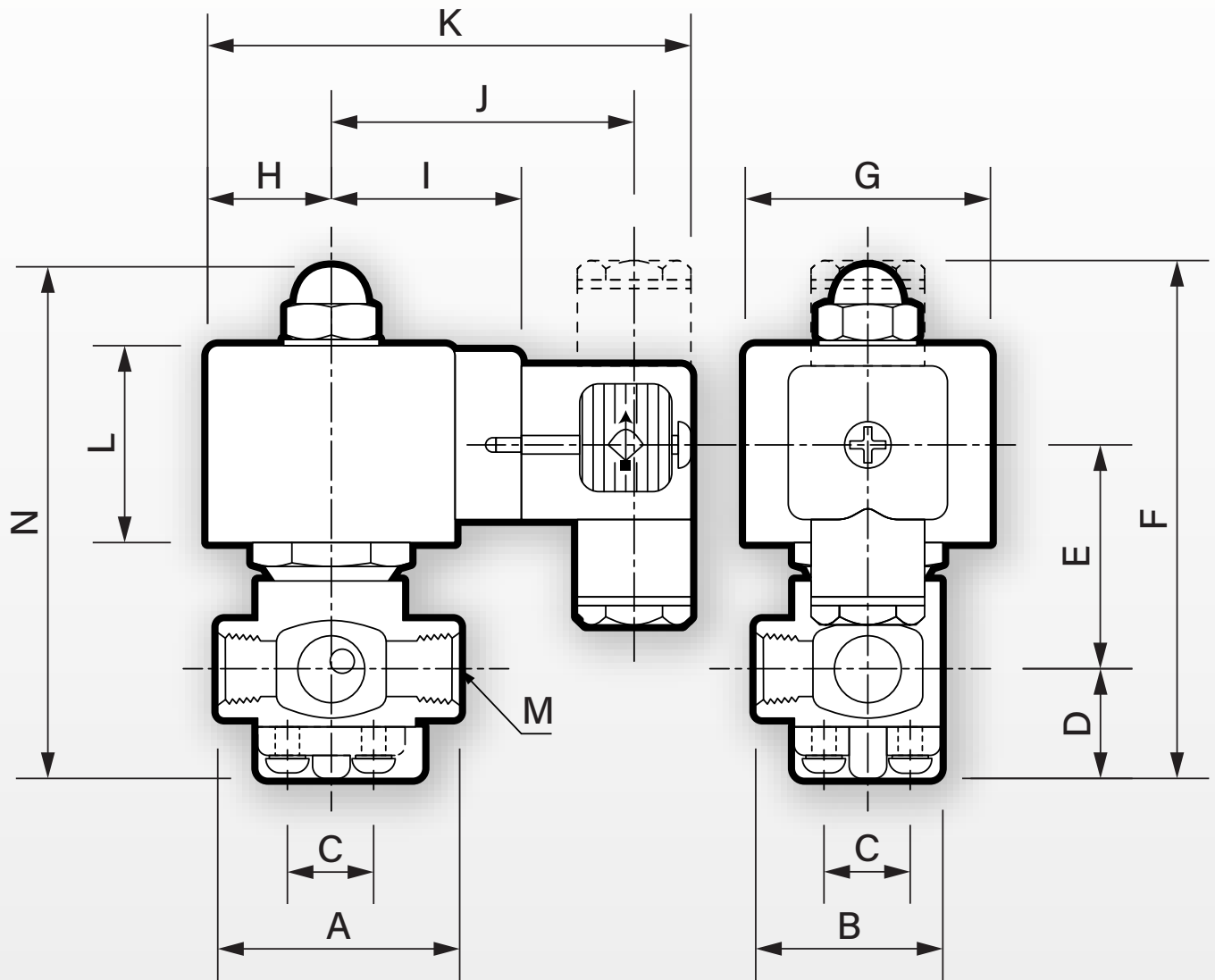
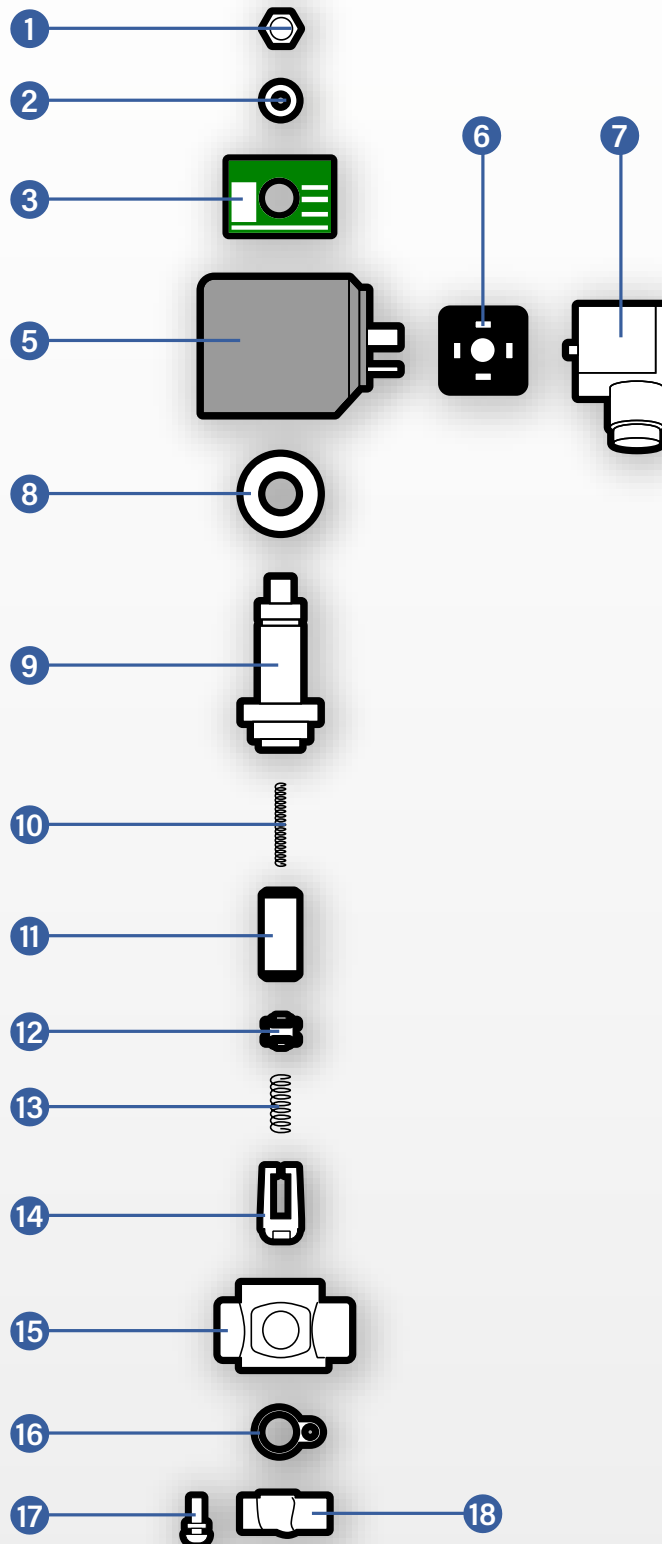


TABLE 1: DIMENSIONS IN MM

Size	A	B	C	D	E	F	G	H	I	J	K	L	M	N	Weight
1/4" 1.6mm orifice	43	33	15	19	48	98	40	23	35	56	89	38	1/4"	95	0.67 kg
1/4" 2.2mm orifice	43	33	15	19	48	98	40	23	35	56	89	38	1/4"	95	0.67 kg

3/2 BRASS 3-WAY DIRECT ACTING

SOLENOID VALVE



3/2 BRASS 3-WAY DIRECT ACTING

SOLENOID VALVE

TABLE 2: PARTS

Item	Part
1	Nut
2	Washer
3	Nameplate
5	Coil
6	Gasket
7	Connector (transparent)
8	Baseplate
9	Solenoid tube
10	Spring
11	Armature core
12	Spring fixed base
13	Spring
14	Fixed bracket
15	Valve body
16	Gasket (bonnet)
17	Screw
18	Valve bonnet

TABLE 3: FLOW (KV) AND PRESSURE RATING

Size	Flow (Kv)	Minimum Pressure	Maximum Pressure (AC Operation)	Maximum Pressure (DC Operation)
¼" 1.6mm orifice	1.28 l/min	0 bar	11 bar	7.7 bar
¼" 2.2mm orifice	2.28 l/min	0 bar	7 bar	4.9 bar

TABLE 4: ELECTRICAL DATA

Voltage (-10% + 10%) Continuous Duty 100%	Coil	Power Consumption		Insulation Class	Enclosure	Electrical Connections
		Inrush	Holding			
24V AC (50/60 Hz) 110V AC (50/60 Hz) 230V AC (50/60 Hz)	WPG2	18.7VA	15.3VA	H 180°C	IP65 with connector	3 spades DN 43650 DIN 40050 VDE 0110
12V DC 24V DC	WPG2	18 Watts	18 Watts	H 180°C	IP65 with connector	3 spades DN 43650 DIN 40050 VDE 0110

3/2 BRASS 3-WAY DIRECT ACTING
SOLENOID VALVE
TABLE 5: PART NUMBERS
SEAL MATERIAL: NBR

Size	12V DC	24V DC	24V AC	110V AC	230V AC
¼" 1.6mm orifice	SV5639-100850	SV5639-100852	SV5639-100854	SV5639-100856	SV5639-100858
¼" 2.2mm orifice	SV5639-100851	SV5639-100853	SV5639-100855	SV5639-100857	SV5639-100859

TABLE 6: PART NUMBERS
SEAL MATERIAL: FKM

Size	12V DC	24V DC	24V AC	110V AC	230V AC
¼" 1.6mm orifice	SV5639-100860	SV5639-100862	SV5639-100864	SV5639-100866	SV5639-100868
¼" 2.2mm orifice	SV5639-100861	SV5639-100863	SV5639-100865	SV5639-100867	SV5639-100869