

BRASS NORMALLY CLOSED 0.5-15 BAR

SERVO ASSISTED SOLENOID VALVE

Key features:

- Servo-assisted solenoid valve
- Normally closed, 2-way operation
- Brass body
- Seal options include: NBR, FKM, EPDM, and HNBR
- Screwed BSP connections
- Sizes available: 3/8" to 2"
- Pressure range: 0.5 to 15 bar
- Pressure rating, ΔP : 0.5 to 10 bar
- Operating voltages: 12V DC, 24V DC, 24V AC, 110V AC, 230V AC
- Supplied with a cable plug
- ATEX approved



DETAILS

A servo-assisted solenoid valve offering normally closed, 2-way operation.

The valve features a brass body with a choice of NBR, FKM, EPDM or HNBR seals and is available in sizes from 3/8" to 2"

The valve should be mounted with the coil upright.

Designed for use with neutral gases and slightly corrosive and mildly aggressive fluids.

Suitable applications include chemical process, pumping systems, processing systems, water/sewage treatment and sterilizers.

Offers high flow rates and low noise; and requires a minimum differential pressure of 0.5 bar to operate fully.

The valve has a working pressure range of 0.5 to 15 bar, a pressure rating, ΔP (differential pressure) of 0.5 to 10 bar and an ambient temperature range of -20°C to +60°C.

Media temperature ranges are dependant on seal materials as follows: -15°C to +80°C (NBR), -10°C to +180°C (FKM), -5°C to +130°C (EPDM) and -40°C to +150°C (HNBR).

Suitable operating voltages are 12V DC, 24V DC, 24V AC, 110V AC, and 230V AC, and supplied fitted with a cable plug.

ATEX Certified with ATEX 22003EX Coil: ATEX EExmIIT4 II 2G & 2D IP65 T130°C.

BRASS NORMALLY CLOSED 0.5-15 BAR

SERVO ASSISTED SOLENOID VALVE

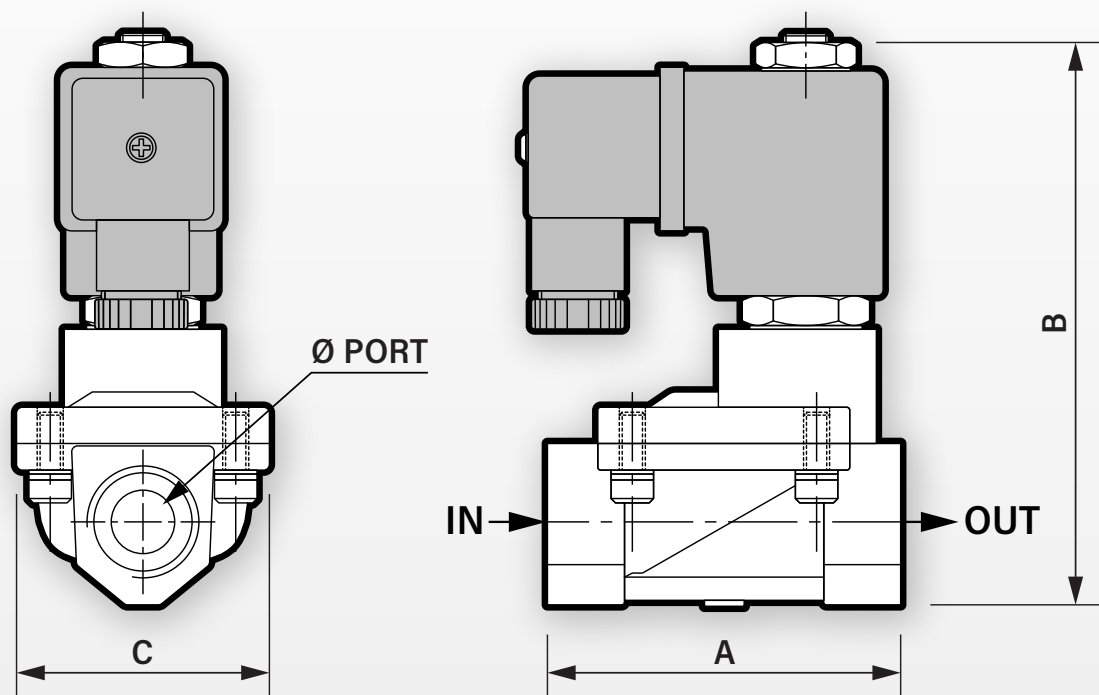


TABLE 1: DIMENSIONS IN MM

Size	A	B	C	Ø Port, BSP	Ø Orifice	Weight
3/8"	66.5	106.5	48	3/8"	13	0.725 kg
1/2"	66.5	106.5	48	1/2"	13	0.725 kg
3/4"	96.0	126.5	70	3/4"	25	1.565 kg
1"	96.0	126.5	70	1"	25	1.565 kg
1 1/4"	131.5	145.5	96	1 1/4"	38	2.560 kg
1 1/2"	131.5	145.5	96	1 1/2"	38	2.560 kg
2"	160.0	160.5	112	2"	50	3.900 kg

BRASS NORMALLY CLOSED 0.5-15 BAR

SERVO ASSISTED SOLENOID VALVE

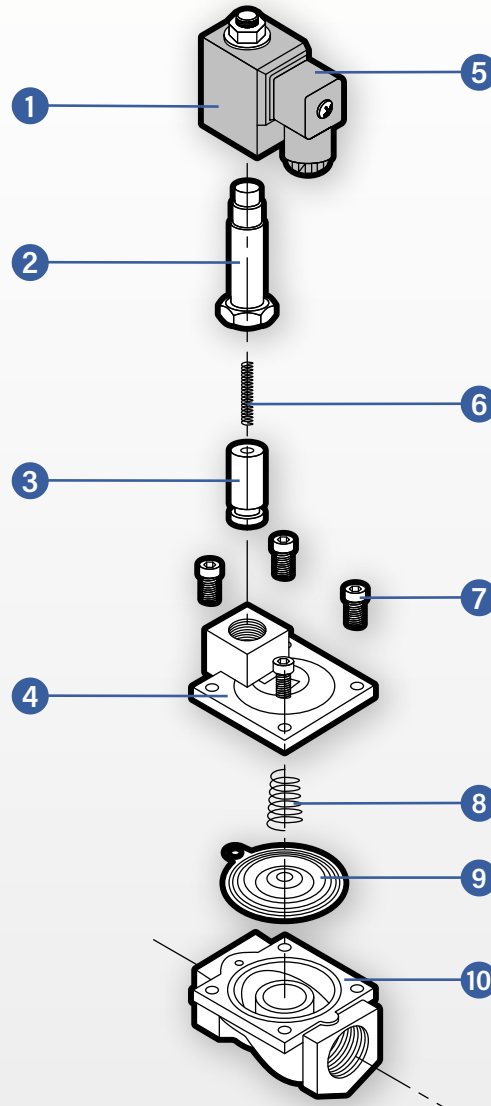


TABLE 2: PARTS

Item	Part
1	Coil
2	Armature
3	Plunger
4	Top cover
5	Connector
6	Spring
7	Screw (x4)
8	Spring
9	Diaphragm
10	Body

BRASS NORMALLY CLOSED 0.5-15 BAR

SERVO ASSISTED SOLENOID VALVE

TABLE 3: FLOW (KV) IN L/MIN

Size	Flow (Kv)
3/8"	40 l/min
1/2"	40 l/min
3/4"	165 l/min
1"	165 l/min
1 1/4"	367 l/min
1 1/2"	500 l/min
2"	600 l/min

TABLE 4: ELECTRICAL DATA

Voltage (-10% + 10%) Continuous Duty 100%	Coil	Power Consumption		Insulation Class	Enclosure	Electrical Connections
		Inrush	Holding			
24V AC (50/60 Hz) 110V AC (50/60 Hz) 230V AC (50/60 Hz)	22003	23VA	17VA	H 180°C	IP65 with connector	3 spades DN 43650 DIN 40050 VDE 0110
12V DC 24V DC	22003	15 Watts	15 Watts	H 180°C	IP65 with connector	3 spades DN 43650 DIN 40050 VDE 0110

TABLE 5: PART NUMBERS

SEAL MATERIAL: NBR

Size	12V DC	24V DC	24V AC	110V AC	230V AC
3/8"	SX5632-100390	SX5632-100397	SX5632-100404	SX5632-100411	SX5632-100418
1/2"	SX5632-100391	SX5632-100398	SX5632-100405	SX5632-100412	SX5632-100419
3/4"	SX5632-100392	SX5632-100399	SX5632-100406	SX5632-100413	SX5632-100420
1"	SX5632-100393	SX5632-100400	SX5632-100407	SX5632-100414	SX5632-100421
1 1/4"	SX5632-100394	SX5632-100401	SX5632-100408	SX5632-100415	SX5632-100422
1 1/2"	SX5632-100395	SX5632-100402	SX5632-100409	SX5632-100416	SX5632-100423
2"	SX5632-100396	SX5632-100403	SX5632-100410	SX5632-100417	SX5632-100424

BRASS NORMALLY CLOSED 0.5-15 BAR

SERVO ASSISTED SOLENOID VALVE

TABLE 6: PART NUMBERS

SEAL MATERIAL: FKM

Size	12V DC	24V DC	24V AC	110V AC	230V AC
3/8"	SX5632-100425	SX5632-100432	SX5632-100439	SX5632-100446	SX5632-100453
1/2"	SX5632-100426	SX5632-100433	SX5632-100440	SX5632-100447	SX5632-100454
3/4"	SX5632-100427	SX5632-100434	SX5632-100441	SX5632-100448	SX5632-100455
1"	SX5632-100428	SX5632-100435	SX5632-100442	SX5632-100449	SX5632-100456
1 1/4"	SX5632-100429	SX5632-100436	SX5632-100443	SX5632-100450	SX5632-100457
1 1/2"	SX5632-100430	SX5632-100437	SX5632-100444	SX5632-100451	SX5632-100458
2"	SX5632-100431	SX5632-100438	SX5632-100445	SX5632-100452	SX5632-100459

TABLE 7: PART NUMBERS

SEAL MATERIAL: EPDM

Size	12V DC	24V DC	24V AC	110V AC	230V AC
3/8"	SX5632-100460	SX5632-100467	SX5632-100474	SX5632-100481	SX5632-100488
1/2"	SX5632-100461	SX5632-100468	SX5632-100475	SX5632-100482	SX5632-100489
3/4"	SX5632-100462	SX5632-100469	SX5632-100476	SX5632-100483	SX5632-100490
1"	SX5632-100463	SX5632-100470	SX5632-100477	SX5632-100484	SX5632-100491
1 1/4"	SX5632-100464	SX5632-100471	SX5632-100478	SX5632-100485	SX5632-100492
1 1/2"	SX5632-100465	SX5632-100472	SX5632-100479	SX5632-100486	SX5632-100493
2"	SX5632-100466	SX5632-100473	SX5632-100480	SX5632-100487	SX5632-100494

TABLE 8: PART NUMBERS

SEAL MATERIAL: HNBR

Size	12V DC	24V DC	24V AC	110V AC	230V AC
3/8"	SX5632-100495	SX5632-100502	SX5632-100509	SX5632-100516	SX5632-100523
1/2"	SX5632-100496	SX5632-100503	SX5632-100510	SX5632-100517	SX5632-100524
3/4"	SX5632-100497	SX5632-100504	SX5632-100511	SX5632-100518	SX5632-100525
1"	SX5632-100498	SX5632-100505	SX5632-100512	SX5632-100519	SX5632-100526
1 1/4"	SX5632-100499	SX5632-100506	SX5632-100513	SX5632-100520	SX5632-100527
1 1/2"	SX5632-100500	SX5632-100507	SX5632-100514	SX5632-100521	SX5632-100528
2"	SX5632-100501	SX5632-100508	SX5632-100515	SX5632-100522	SX5632-100529