

## STAINLESS STEEL NORMALLY CLOSED

## 0.5-15 BAR SERVO ASSISTED SOLENOID VALVE

## Key features:

- Servo-assisted solenoid valve
- Normally closed, 2-way operation
- 316 stainless steel body (CF8M)
- Seal options include: NBR, FKM, EPDM, and HNBR
- Screwed BSP connections
- Sizes available: 3/8" to 2"
- Pressure range: 0.5 to 15 bar
- Pressure rating,  $\Delta P$ : 0.5 to 10 bar
- Operating voltages: 12V DC, 24V DC, 24V AC, 110V AC, 230V AC
- Supplied with a cable plug
- ATEX approved



## DETAILS

A servo-assisted solenoid valve offering normally closed, 2-way operation.

The valve features a stainless steel body with a choice of NBR, FKM, EPDM or HNBR seals and is available in sizes from 3/8" to 2".

The valve should be mounted with the coil upright.

Designed for use with neutral gases and slightly corrosive and mildly aggressive fluids.

Suitable applications include chemical process, pumping systems, processing systems, water/sewage treatment and sterilizers.

Offers high flow rates and low noise; and requires a minimum differential pressure of 0.5 bar to operate fully.

The valve has a working pressure range of 0.5 to 15 bar, a pressure rating,  $\Delta P$  (differential pressure) of 0.5 to 10 bar and an ambient temperature range of -40°C to +60°C.

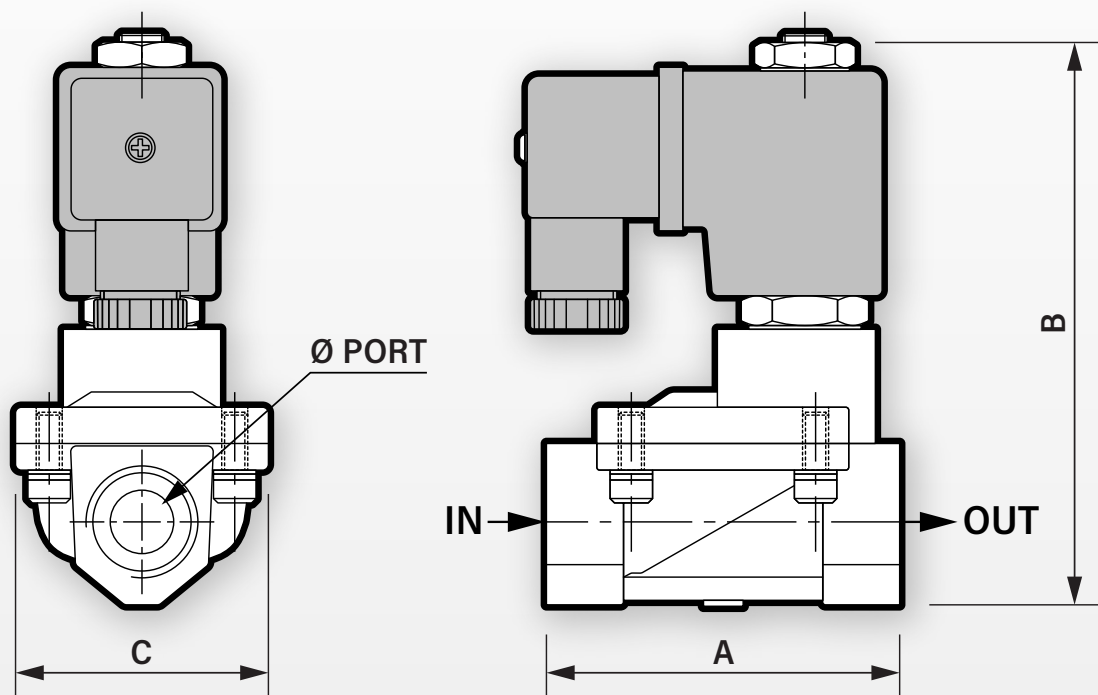
Media temperature ranges are dependant on seal materials as follows: -15°C to +80°C (NBR), -10°C to +180°C (FKM), -5°C to +130°C (EPDM) and -40°C to +150°C (HNBR).

Suitable operating voltages are 12V DC, 24V DC, 24V AC, 110V AC, and 230V AC, and supplied fitted with a cable plug.

ATEX Certified with ATEX 22003EX Coil: ATEX EExmIIT4 II 2G & 2D IP65 T130°C.

## STAINLESS STEEL NORMALLY CLOSED

## 0.5-15 BAR SERVO ASSISTED SOLENOID VALVE

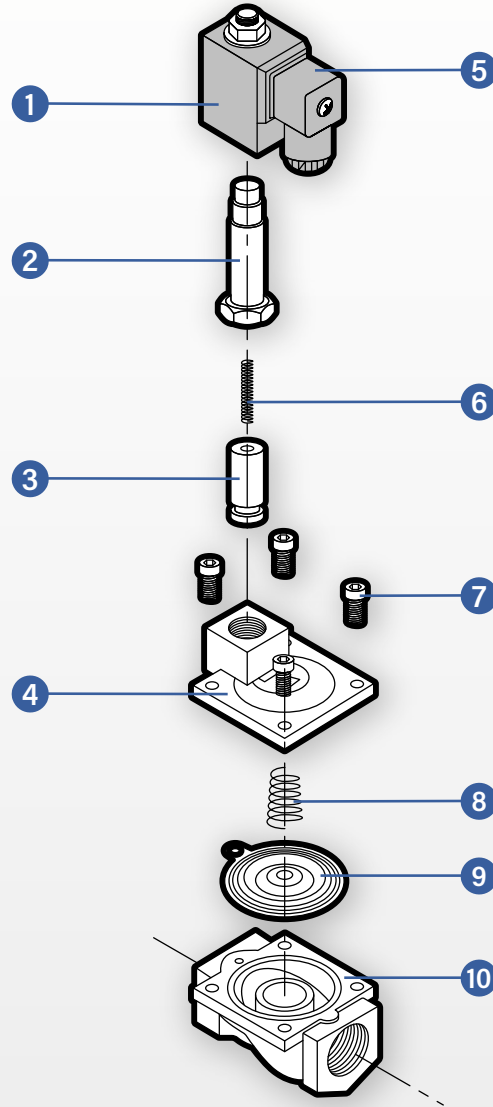


**TABLE 1: DIMENSIONS IN MM**

Size	A	B	C	Ø Port, BSP	Ø Orifice	Weight
3/8"	66.5	106.5	48	3/8"	13	0.740 kg
1/2"	66.5	106.5	48	1/2"	13	0.740 kg
3/4"	96.0	126.0	75	3/4"	25	1.565 kg
1"	96.0	126.0	75	1"	25	1.565 kg
1 1/4"	131.5	145.5	101	1 1/4"	38	2.560 kg
1 1/2"	131.5	145.5	101	1 1/2"	38	2.560 kg
2"	160.0	160.0	118	2"	50	3.440 kg

## STAINLESS STEEL NORMALLY CLOSED

## 0.5-15 BAR SERVO ASSISTED SOLENOID VALVE



**TABLE 2: PARTS**

Item	Part
1	Coil
2	Armature
3	Plunger
4	Top cover
5	Connector
6	Spring
7	Screw (x4)
8	Spring
9	Diaphragm
10	Body

## STAINLESS STEEL NORMALLY CLOSED

## 0.5-15 BAR SERVO ASSISTED SOLENOID VALVE

### TABLE 3: FLOW (KV) IN L/MIN

Size	Flow (Kv)
3/8"	40 l/min
1/2"	40 l/min
3/4"	165 l/min
1"	165 l/min
1 1/4"	367 l/min
1 1/2"	500 l/min
2"	580 l/min

### TABLE 4: ELECTRICAL DATA

Voltage (-10% + 10%) Continuous Duty 100%	Coil	Power Consumption		Insulation Class	Enclosure	Electrical Connections
		Inrush	Holding			
24V AC (50/60 Hz) 110V AC (50/60 Hz) 230V AC (50/60 Hz)	22003	23VA	17VA	H 180°C	IP65 with connector	3 spades DN 43650 DIN 40050 VDE 0110
12V DC 24V DC	22003	15 Watts	15 Watts	H 180°C	IP65 with connector	3 spades DN 43650 DIN 40050 VDE 0110

### TABLE 5: PART NUMBERS

#### SEAL MATERIAL: FKM

Size	12V DC	24V DC	24V AC	110V AC	230V AC
3/8"	SX5633-100530	SX5633-100537	SX5633-100544	SX5633-100551	SX5633-100558
1/2"	SX5633-100531	SX5633-100538	SX5633-100545	SX5633-100552	SX5633-100559
3/4"	SX5633-100532	SX5633-100539	SX5633-100546	SX5633-100553	SX5633-100560
1"	SX5633-100533	SX5633-100540	SX5633-100547	SX5633-100554	SX5633-100561
1 1/4"	SX5633-100534	SX5633-100541	SX5633-100548	SX5633-100555	SX5633-100562
1 1/2"	SX5633-100535	SX5633-100542	SX5633-100549	SX5633-100556	SX5633-100563
2"	SX5633-100536	SX5633-100543	SX5633-100550	SX5633-100557	SX5633-100564

## STAINLESS STEEL NORMALLY CLOSED

## 0.5-15 BAR SERVO ASSISTED SOLENOID VALVE

**TABLE 6: PART NUMBERS**

**SEAL MATERIAL: NBR**

Size	12V DC	24V DC	24V AC	110V AC	230V AC
3/8"	SX5633-100565	SX5633-100572	SX5633-100579	SX5633-100586	SX5633-100593
1/2"	SX5633-100566	SX5633-100573	SX5633-100580	SX5633-100587	SX5633-100594
3/4"	SX5633-100567	SX5633-100574	SX5633-100581	SX5633-100588	SX5633-100595
1"	SX5633-100568	SX5633-100575	SX5633-100582	SX5633-100589	SX5633-100596
1 1/4"	SX5633-100569	SX5633-100576	SX5633-100583	SX5633-100590	SX5633-100597
1 1/2"	SX5633-100570	SX5633-100577	SX5633-100584	SX5633-100591	SX5633-100598
2"	SX5633-100571	SX5633-100578	SX5633-100585	SX5633-100592	SX5633-100599

**TABLE 7: PART NUMBERS**

**SEAL MATERIAL: EPDM**

Size	12V DC	24V DC	24V AC	110V AC	230V AC
3/8"	SX5633-100600	SX5633-100607	SX5633-100614	SX5633-100621	SX5633-100628
1/2"	SX5633-100601	SX5633-100608	SX5633-100615	SX5633-100622	SX5633-100629
3/4"	SX5633-100602	SX5633-100609	SX5633-100616	SX5633-100623	SX5633-100630
1"	SX5633-100603	SX5633-100610	SX5633-100617	SX5633-100624	SX5633-100631
1 1/4"	SX5633-100604	SX5633-100611	SX5633-100618	SX5633-100625	SX5633-100632
1 1/2"	SX5633-100605	SX5633-100612	SX5633-100619	SX5633-100626	SX5633-100633
2"	SX5633-100606	SX5633-100613	SX5633-100620	SX5633-100627	SX5633-100634

**TABLE 8: PART NUMBERS**

**SEAL MATERIAL: HNBR**

Size	12V DC	24V DC	24V AC	110V AC	230V AC
3/8"	SX5633-100635	SX5633-100642	SX5633-100649	SX5633-100656	SX5633-100663
1/2"	SX5633-100636	SX5633-100643	SX5633-100650	SX5633-100657	SX5633-100664
3/4"	SX5633-100637	SX5633-100644	SX5633-100651	SX5633-100658	SX5633-100665
1"	SX5633-100638	SX5633-100645	SX5633-100652	SX5633-100659	SX5633-100666
1 1/4"	SX5633-100639	SX5633-100646	SX5633-100653	SX5633-100660	SX5633-100667
1 1/2"	SX5633-100640	SX5633-100647	SX5633-100654	SX5633-100661	SX5633-100668
2"	SX5633-100641	SX5633-100648	SX5633-100655	SX5633-100662	SX5633-100669